



FRANK D. LANTERMAN

REGIONAL CENTER

Family Support



UPDATE May 2026



Lanterman Act

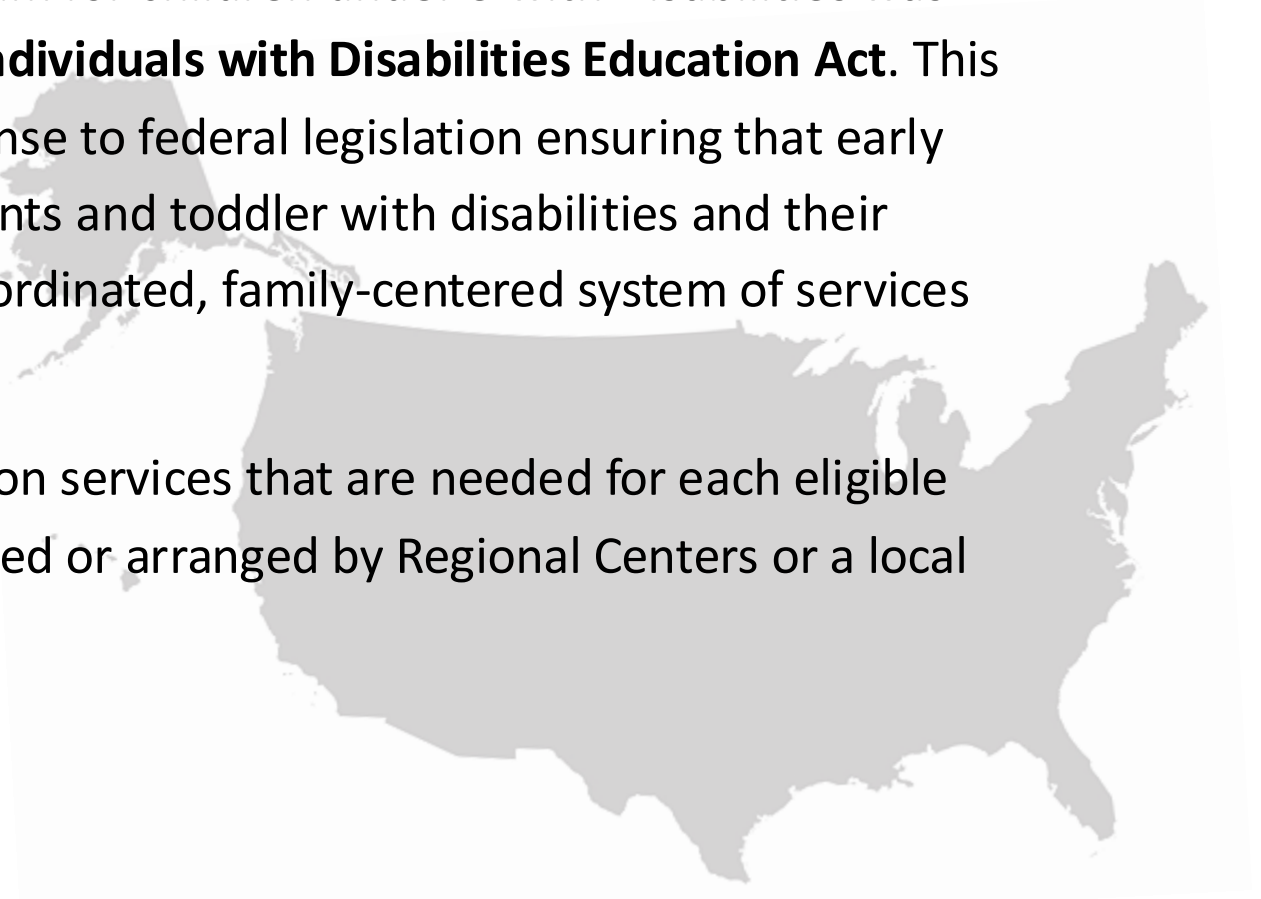


- **The Lanterman Act** was written to enable individuals with Developmental Disability:
 - To live a more independent, productive life
 - To approximate the pattern of everyday living available to people of the same age without disabilities
 - To support integration into mainstream life within their community



Early Start Act

- The Early Intervention Program for children under 3 with Disabilities was enacted in 1986 under the **Individuals with Disabilities Education Act**. This program is California's response to federal legislation ensuring that early intervention services for infants and toddler with disabilities and their families are provided in a coordinated, family-centered system of services that are available statewide.
- In California, Early intervention services that are needed for each eligible infant or toddler are purchased or arranged by Regional Centers or a local education agency.





FDLRC Frank D. Lanterman Regional Center

SERVICE AREAS

Hollywood/Wilshire

Central Los Angeles

Pasadena

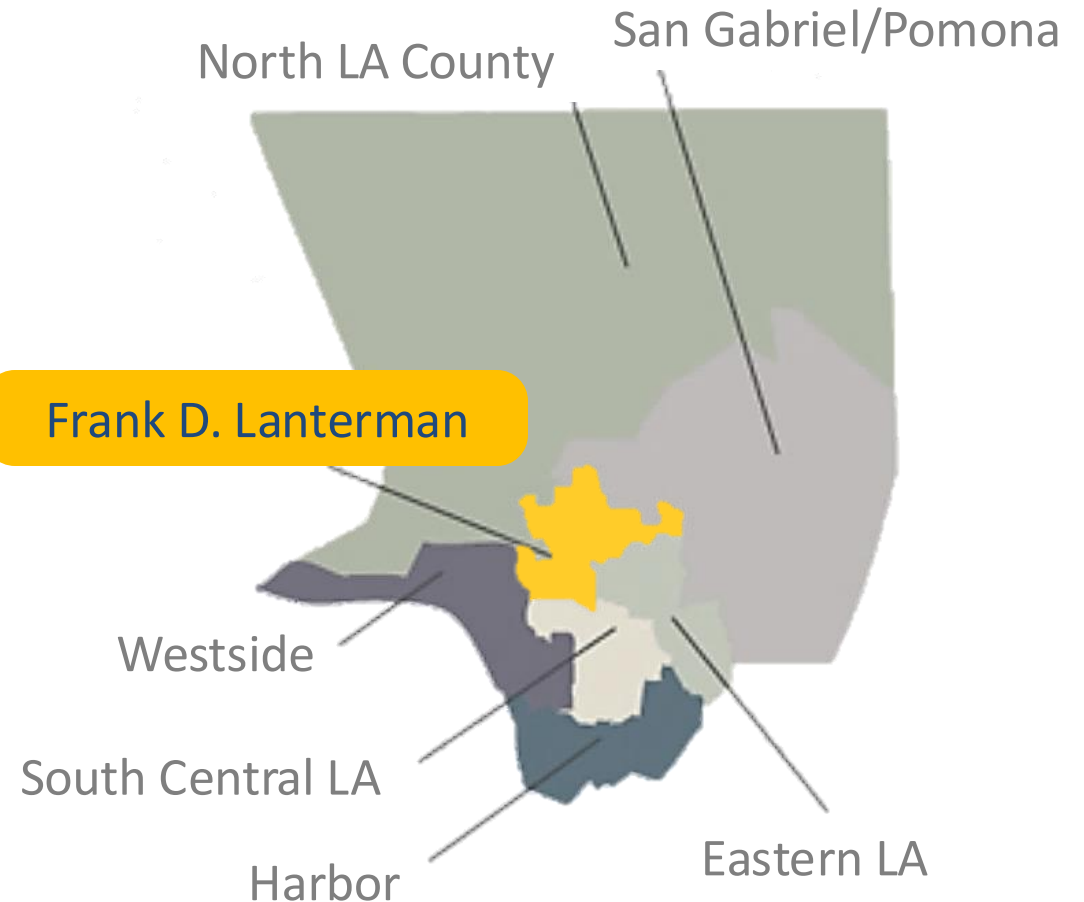
Burbank/Eagle Rock

Glendale

La Canada-Flintridge

La Crescenta

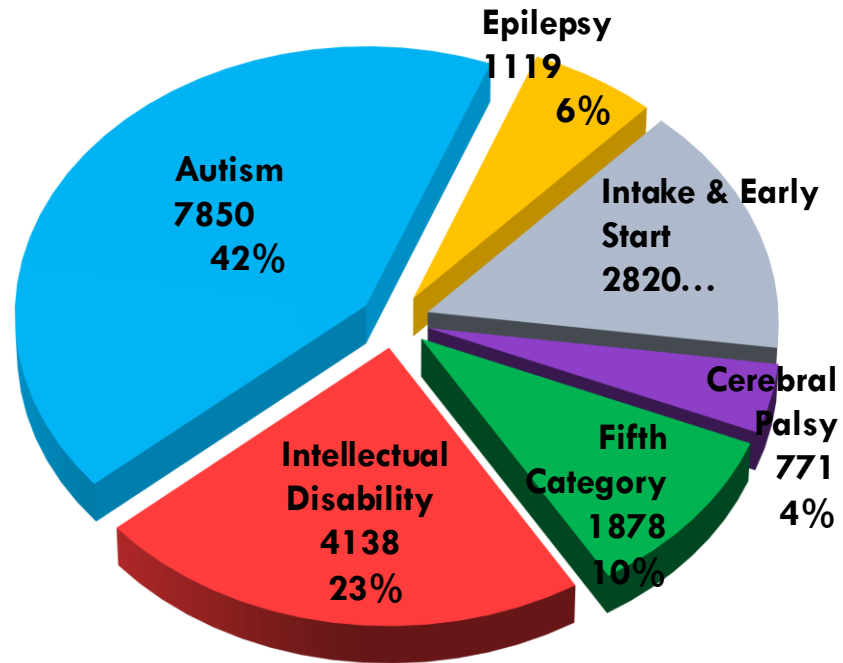
Frank D. Lanterman



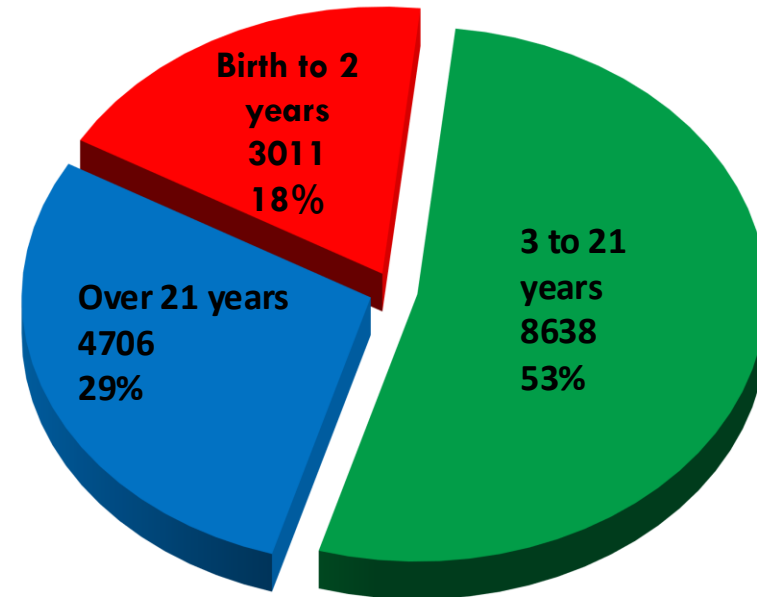


FDLRC Frank D. Lanterman Regional Center

TOTAL INDIVIDUALS SERVED BY DIAGNOSIS



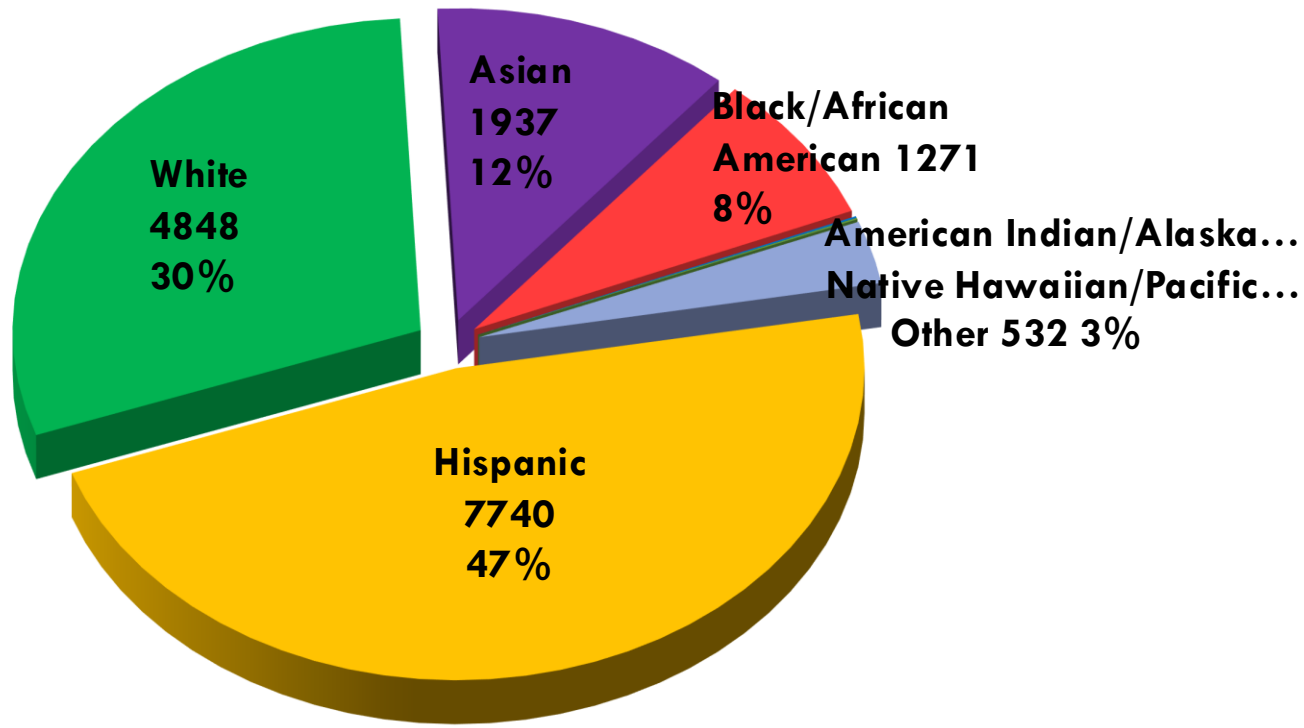
TOTAL INDIVIDUALS SERVED BY AGE



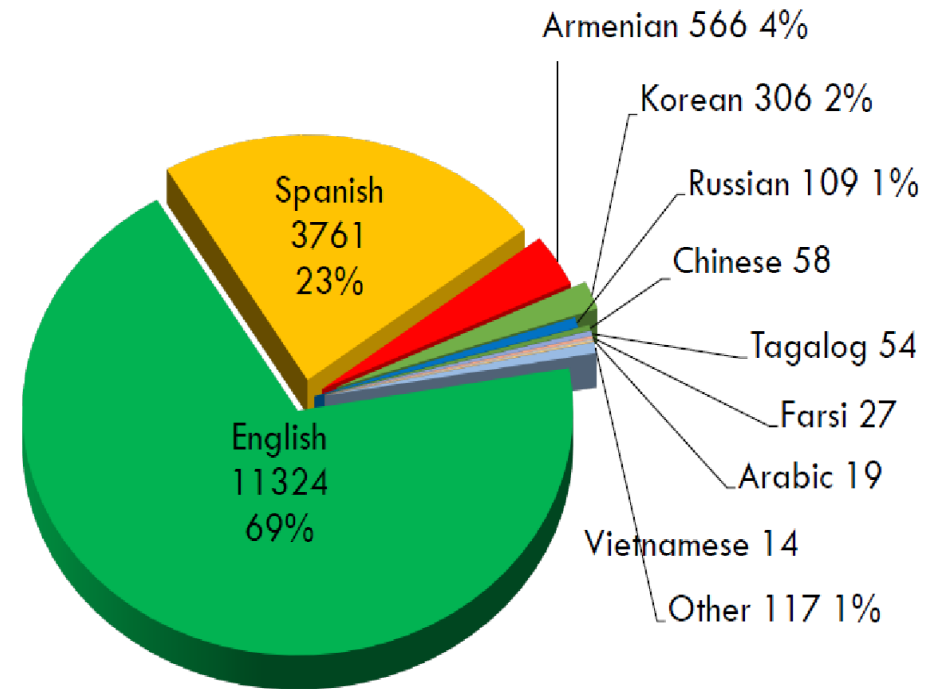


FDLRC Frank D. Lanterman Regional Center

TOTAL INDIVIDUALS SERVED BY ETHNICITY OR RACE



TOTAL INDIVIDUALS SERVED BY PREFERRED LANGUAGE





Regional Center Eligibility (0-3)

- Under **Early Start Act**
- High Risk Factors including:
 - premature birth (less than 32 weeks) and low birth weight
 - associated medical complications: injury, accident or illness which may seriously or permanently affect a child's development
 - prenatal substance exposure
 - significant failure to thrive
- Established Risk: genetic disorders, Down Syndrome, etc.
- Developmental delay (25%) in cognitive, physical, expressive and receptive communication, social or emotional, or adaptive



Regional Center Eligibility (3+)

- Under **Lanterman Act**
- Disability must begin before 18th birthday, expected to continue indefinitely, and present a significant disability in 3 or more functional areas of life
- Must be due to one of the following conditions:
 - Autism
 - Cerebral Palsy
 - Epilepsy
 - Intellectual Disability
 - Disabling condition closely related to intellectual disability



Provisional Eligibility (3-5)

- Child is three or four years of age
- The disability is not solely physical in nature
- The child has significant functional limitations in at least two of the following areas of major life activities:
 - Self care
 - Receptive and expressive language
 - Learning
 - Mobility
 - Self-direction

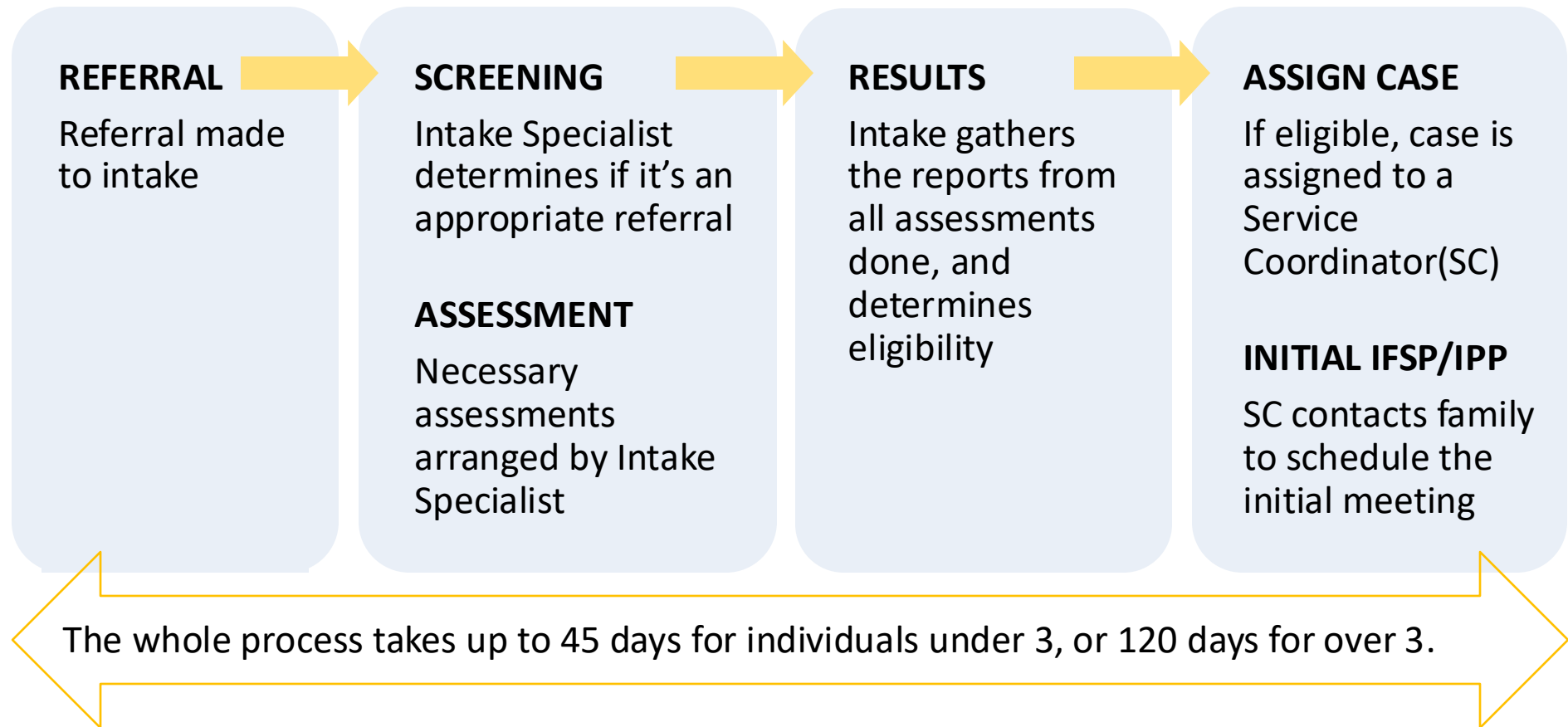


Referral to Regional Center

- For families who want to enter Regional Center system
- Which Regional Center?
 - www.dds.ca.gov/rc/lookup-rcs-by-county
- For **Lanterman**, refer to:
 - 213-252-8610 / referrals@lanterman.org
- Provide following information:
 - the name and date of birth of the person you are referring
 - the person's address
 - parent's name and telephone number/email (+language preference)
 - a short explanation of the concerns, or the reason for referral
- More information:
 - <https://lanterman.org/getting-started/>

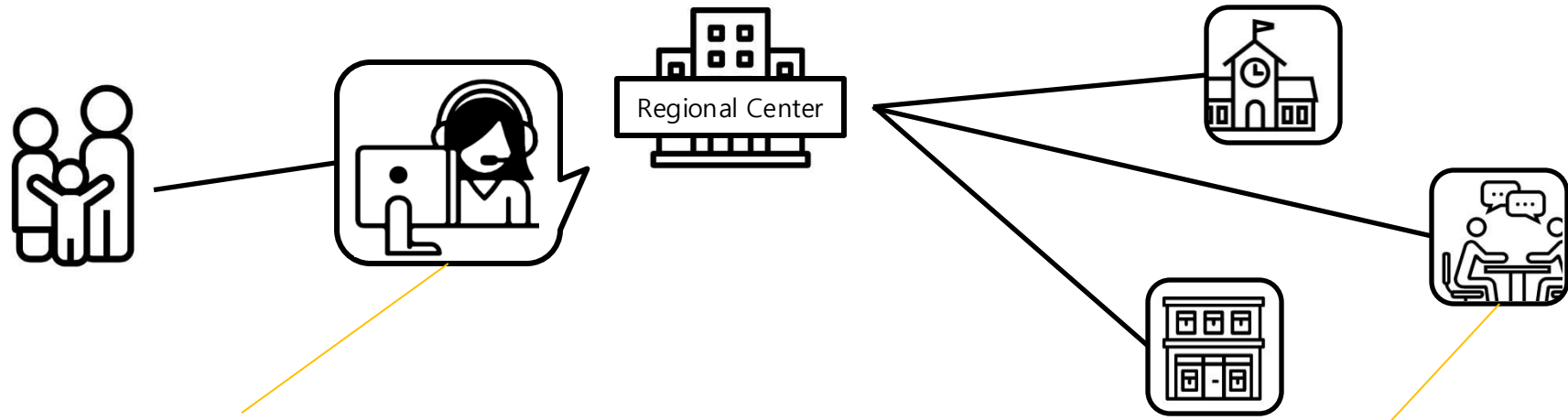


Intake Process





Service Coordination



SERVICE COORDINATOR (SC)

- A professional who knows the resources (community resources and FDLRC's information), supports, and services that individuals and their family member may need.
- He or she works to develop and implement and IPP (Individual Program Plan) or IFSP (Individual Family Service Plan).

SERVICE PROVIDER

- Company, Organization, or Individual contracted with the Regional Center
- Provide service to individuals with developmental disabilities and families, receives funding from Regional Center.



Service Programs

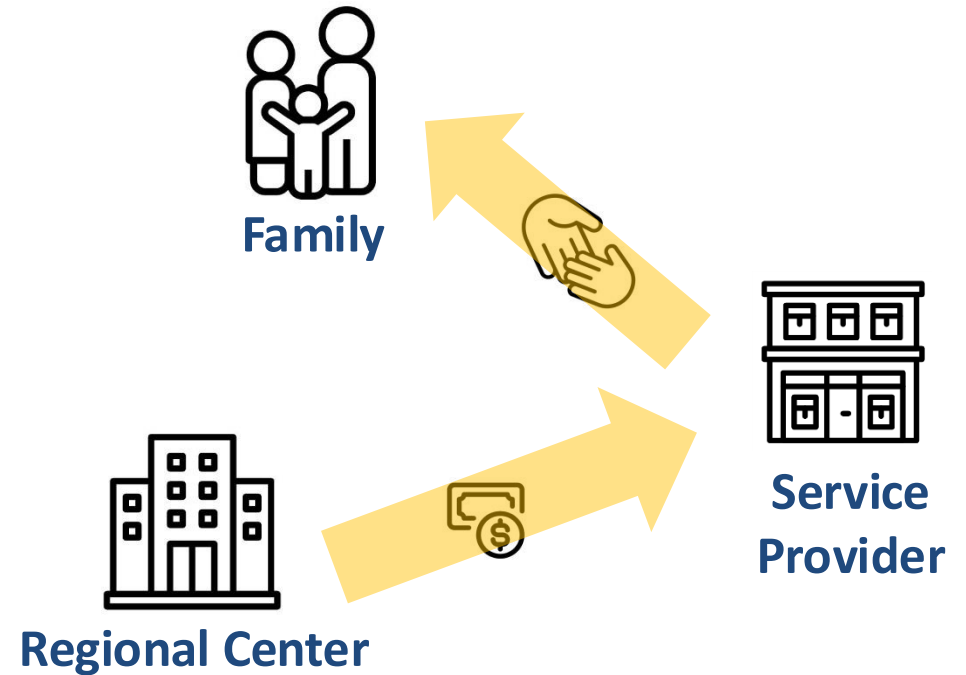
EARLY INTERVENTION	EARLY CHILDHOOD	SCHOOL AGE	ON-GOING
Age 0 – 3	Age 3 – 5	Age 5 – 16	Age 16 through the Lifespan
<ul style="list-style-type: none"> • Designed to minimize or prevent future impacts of the disability • IFSP (Individual and Family Service Plan) • Reviewed every 6 months • Transition IFSP at 2.9 years, with school district 	<ul style="list-style-type: none"> • IPP (Individual Program Plan) • Typically reviewed every year • Work with school district and behavioral plan 	<ul style="list-style-type: none"> • IPP (Individual Program Plan) • Typically reviewed every year • Focus on transition and program referrals, living options, monitoring health, etc. 	



Funding

HOW ARE SERVICES FUNDED?

- Lanterman Regional Center is a **“Payer of Last Resort”**
- Services must be provided through natural/generic options if possible
- If a service cannot be provided through generic services, the Regional Center may consider providing funding
- Services subject to re-authorization dependent on a showing of the child’s progress, based on the IFSP/IPP





Main Service Domains

	Living	Education	Social	Health
Available Resources	Parents/Guardian IHSS SSI / SSA Cal-Fresh	School School District	Afterschool Community Programs	Insurance Medi-Cal Medi-Care CCS
Possible Regional Center Services	Group Home Respite Support	Legal Advice	Social Skills Community Integration Social Recreation	Behavior Therapy copayments



KYRC Koch-Young Resource Center

RESOURCES & INFORMATION

- Help Desk
 - Via phone & email
- Open from 8:30 AM to 5 PM, Monday-Friday
- Library & toy loans
- Information and referral

LOCATIONS

- Los Angeles
 - 3303 Wilshire Blvd., First Floor
Los Angeles CA 90010
 - 213-252-5600
 - kyrc@Lanterman.org
- Glendale
 - 611 N Brand Blvd. #200
Glendale, CA 91203
 - 213-212-8194
 - glendalekyrc@Lanterman.org



Referrals to KYRC

For Lanterman Regional Center families who needs resources/information

- For anyone who wants to learn about FDLRC
- Information & Resources
 - General information about Lanterman Regional Center
 - General information about services
- Parent Trainings & Workshops
 - Some are specific to FDLRC, some are general
- Support Groups
 - Primarily open to FDLRC families
 - Some groups accept families from other RC, after discussing among facilitators
- Community Navigator Program
 - 1:1 support for LRC parents and caregivers
 - Education and navigation support with regional center services and generic community resources
 - Contact your Service Coordinator for a referral



KYRC Koch-Young Resource Center

PROGRAMS

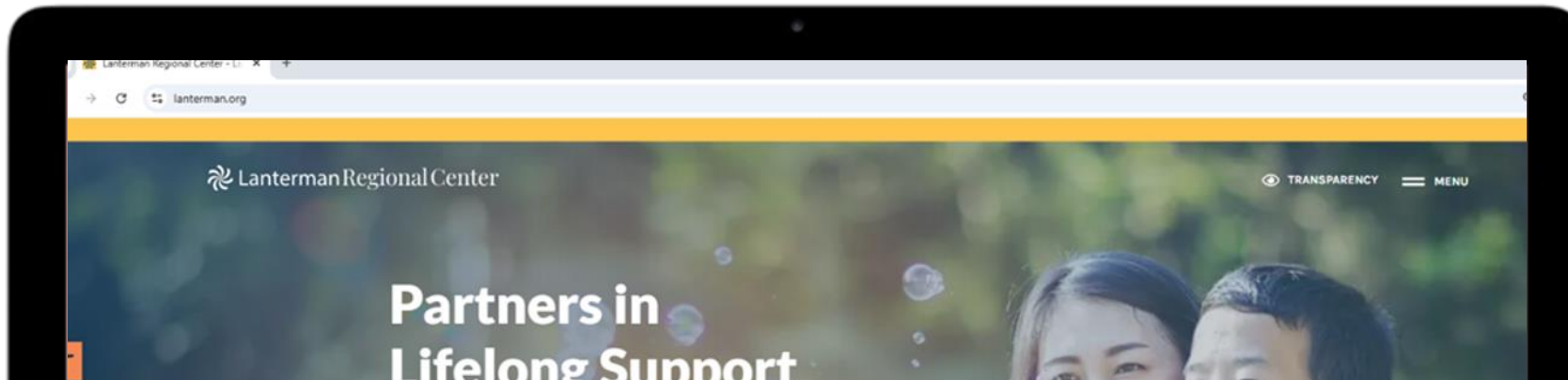
- Support Groups
 - For English, Spanish, Korean, Armenian, Chinese speakers
 - For parents, siblings, and individuals served
- Trainings & Workshops
- Peer Support Partners
 - English, Spanish, Armenian, and Korean speaking
 - For FDLRC families only
- Play Groups & Story Time
 - 0-5 age group
- Outreach





Lanterman.org

- Information & Resources
 - Support groups, Library, PSP Match request, Publications, Service Standards
- News & Events
 - Event calendar, General news
- Training
 - Training materials, Behavioral Training, Online Learning, Self-Determination Training
- Subscribe for E-Bulletins
- Network of Care
- And more!





KYRC Contact Information

LOS ANGELES LOCATION

GLENDALE LOCATION



3303 Wilshire Bl. 1st Floor
Los Angeles, CA 90010

611 N. Brand Bl. #200
Glendale, CA 91203



kyrc@Lanterman.org

glendalekyrc@Lanterman.org



213-252-5600

213-212-8194



www.Lanterman.org

www.Lanterman.org