



HARBOR

REGIONAL CENTER

www.harborrc.org



WHAT ARE CALIFORNIA REGIONAL CENTERS?



- Contracted with California's Department of Developmental Services, and operates under the Lanterman Developmental Disabilities Act
- Purpose of Lanterman Act
 - To allow individuals with developmental disabilities to live full lives in the community, with supports, rather than institutionalization.
- Regional centers are unique to the State of California
- There are 21 regional centers throughout the State

20
LANGUAGES

30+
EPISODES



What are
Regional Centers?

LANTERMAN AND FRIENDS -
AN ANIMATED SERIES!

<https://lantermanandfriends.org/>



OUR VISION



Harbor Regional Center envisions a world where everyone with a developmental disability has meaningful relationships, is respected and empowered, is informed and knowledgeable, and reaches their highest potential throughout their life.

<https://www.harborrc.org/who-we-are/>

OUR MISSION



Harbor Regional Center empowers everyone with developmental disabilities, and the people who support them, by providing innovative and person-centered services that help them live their best lives in our diverse community.

<https://www.harborrc.org/who-we-are/>

WHO WE ARE

Harbor is the third largest of the seven regional centers in Los Angeles County.

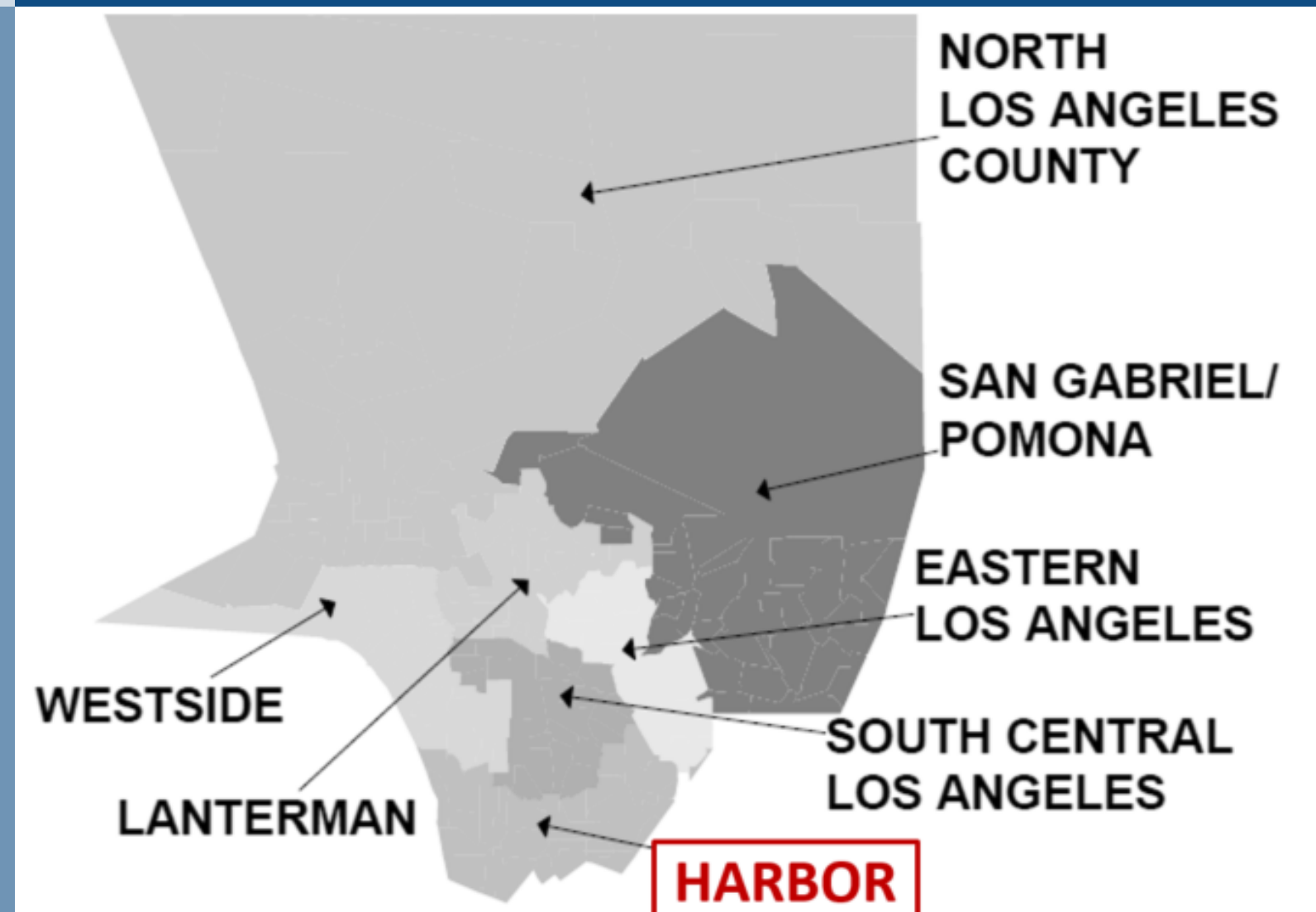
June 2025
Data

- NORTH LA REGIONAL CENTER: 37,988
- SOUTH CENTRAL LA REGIONAL CENTER: 24,081
- **HARBOR REGIONAL CENTER: 19,030**
- SAN GABRIEL/POMONA REGIONAL CENTER: 17,340
- EAST LA REGIONAL CENTER: 15,810
- LANTERMAN REGIONAL CENTER: 14,100
- WESTSIDE REGIONAL CENTER: 11,901

Regional Center Lookup Tool:

<https://www.dds.ca.gov/rc/lookup-rs-by-county/>

REGIONAL CENTERS IN LOS ANGELES COUNTY



(310) 543-0100



Torrance Campus

21309 Hawthorne Blvd.
Torrance, CA 90503



Long Beach Satellite Office

1155 E. San Antonio Dr.
Long Beach, CA 90807

LOCATIONS

Communities We Serve:

- Artesia
- Avalon
- Bellflower
- Carson
- Cerritos
- Harbor City
- Harbor Gateway
- Hawaiian Gardens
- Hermosa Beach
- Lakewood
- Lomita
- Long Beach
- Manhattan Beach
- Norwalk
- Palos Verdes Estates
- Rancho Palos Verdes
- Redondo Beach
- Rolling Hills Estates
- San Pedro
- Signal Hill
- Torrance
- Wilmington



WHO WE SERVE

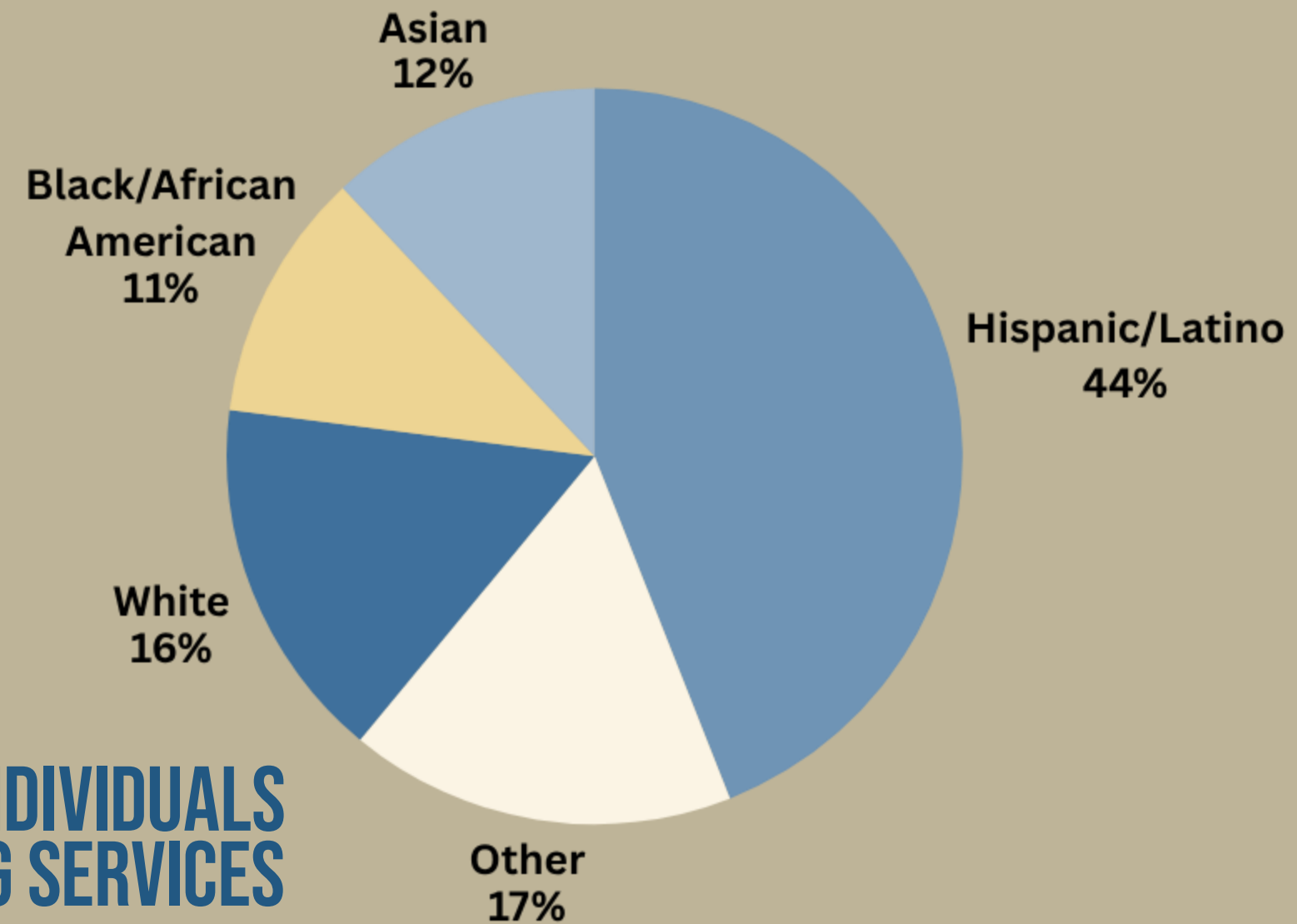


PREFERRED LANGUAGES

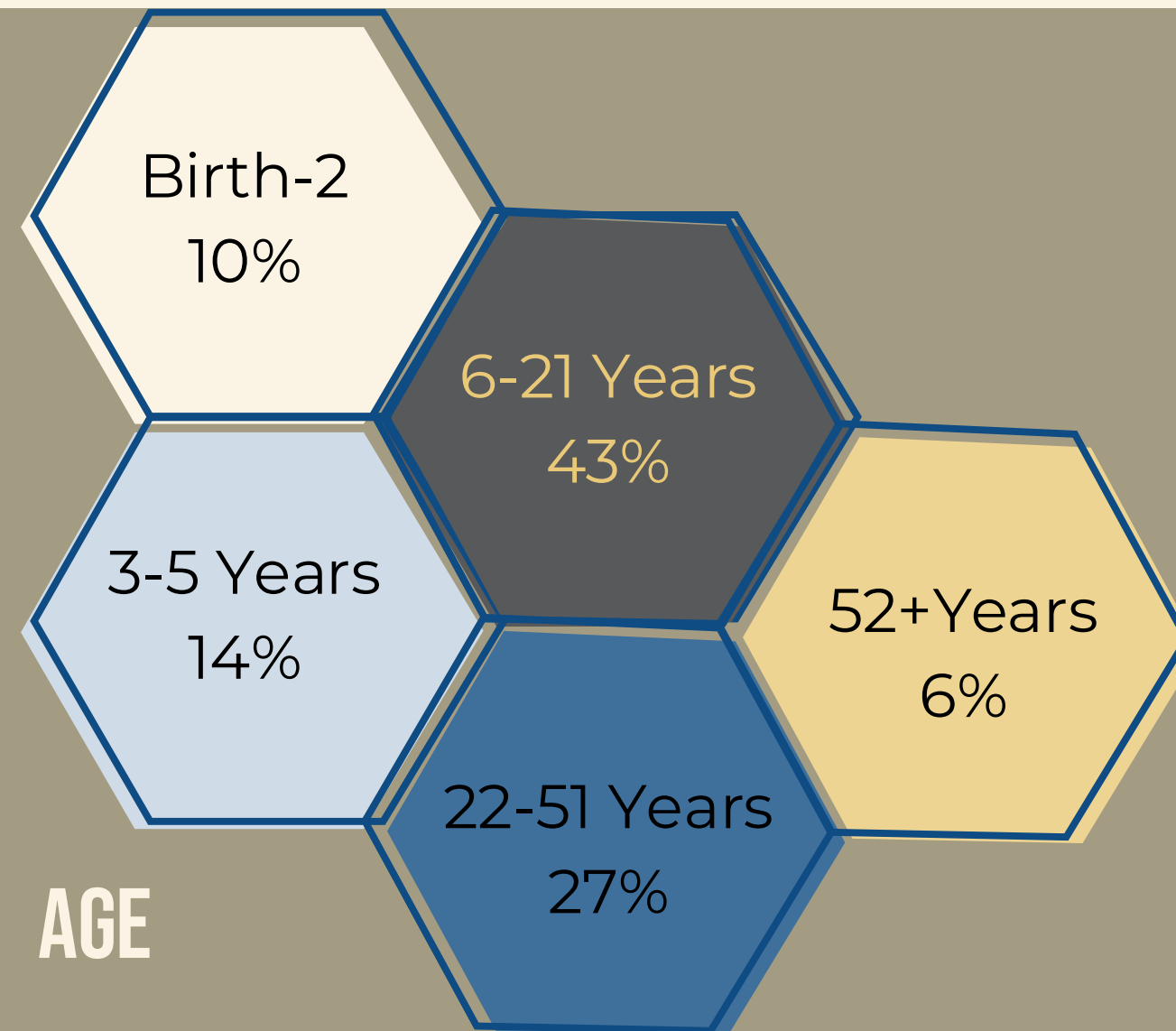
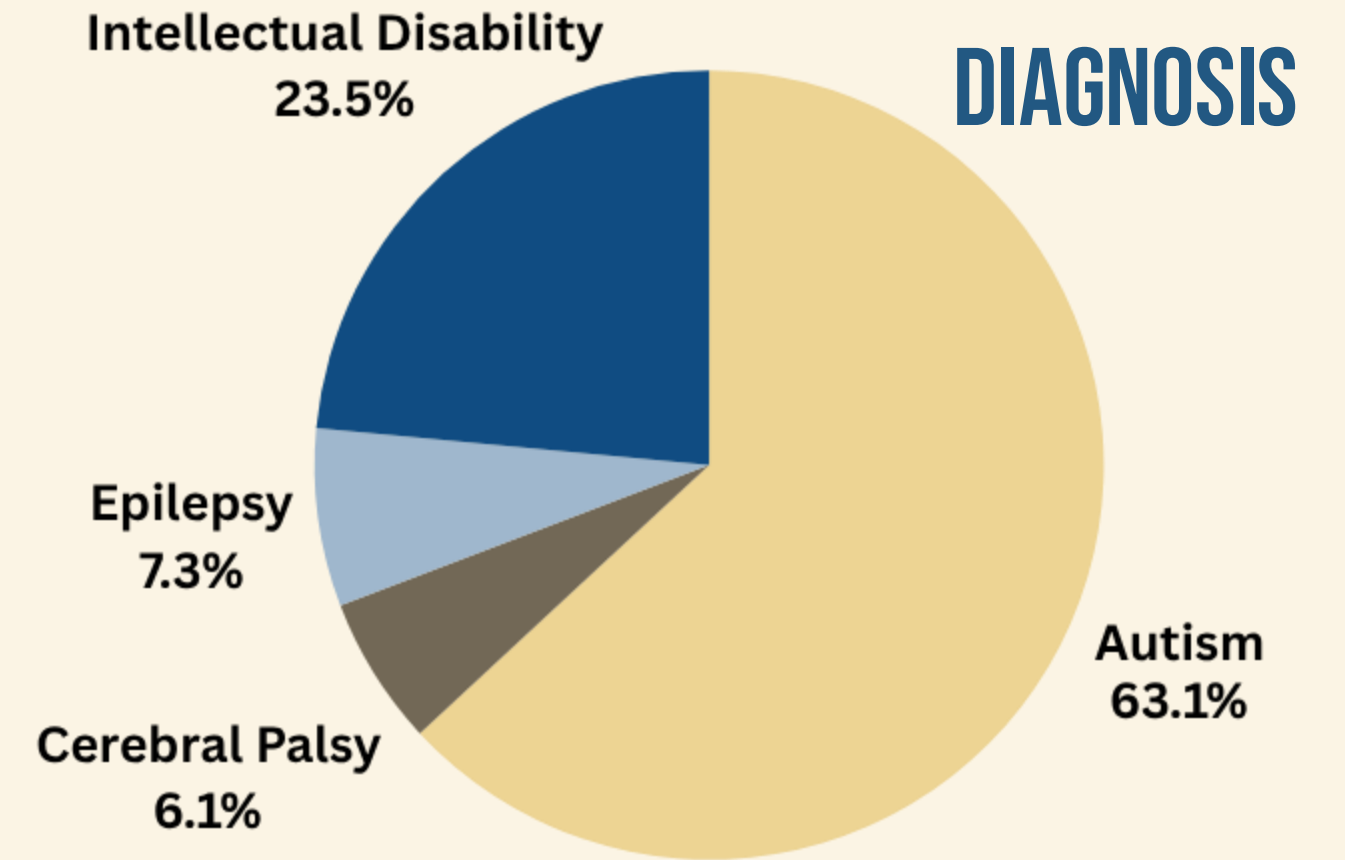
English	Khmer	Mandarin
Spanish	Korean	Tagalog
	Japanese	Vietnamese



ETHNICITY OF INDIVIDUALS RECEIVING SERVICES



WHO WE SERVE



WHAT WE DO: SERVICES & SUPPORTS



Service Coordination

- Primary point of contact for individuals & families
- Lifelong individualized planning
- Purchase of necessary services
- Information and referral, finding and using community resources
- Advocacy for the protection of legal, civil and service rights
- Early intervention services for at risk infants and families
- Planning, placement, and monitoring for 24 hour out-of-home-care

Person-Centered Services Planning

- Individual Family Service Plan (IFSP) for children 3 and under
- Individual Program Plan (IPP) for anyone 3 years of age and older

SERVICES WE PROVIDE

Existing legislation requires Regional Centers first need to explore generic services (IDEA §303.510)

- Medi-Cal/Health Insurance
- School Districts



EARLY CHILDHOOD

- Speech Therapy
- Physical Therapy
- Behavioral Services
- Occupational Therapy
- Center Based Programs
- Family Support (Respite, childcare assistance, education)



SCHOOL AGE

- Many services that are provided during this age are done through publicly funded agencies, such as health insurance and school districts.
- Family Support (Respite, childcare assistance, education)
- Support at Individualized Education Plan (IEP) meetings



ADULTS

- Post Secondary Education Support
- Day Programs
- Supported Employment
- Residential placement
- Independent Living Skills/Supported Living Skills

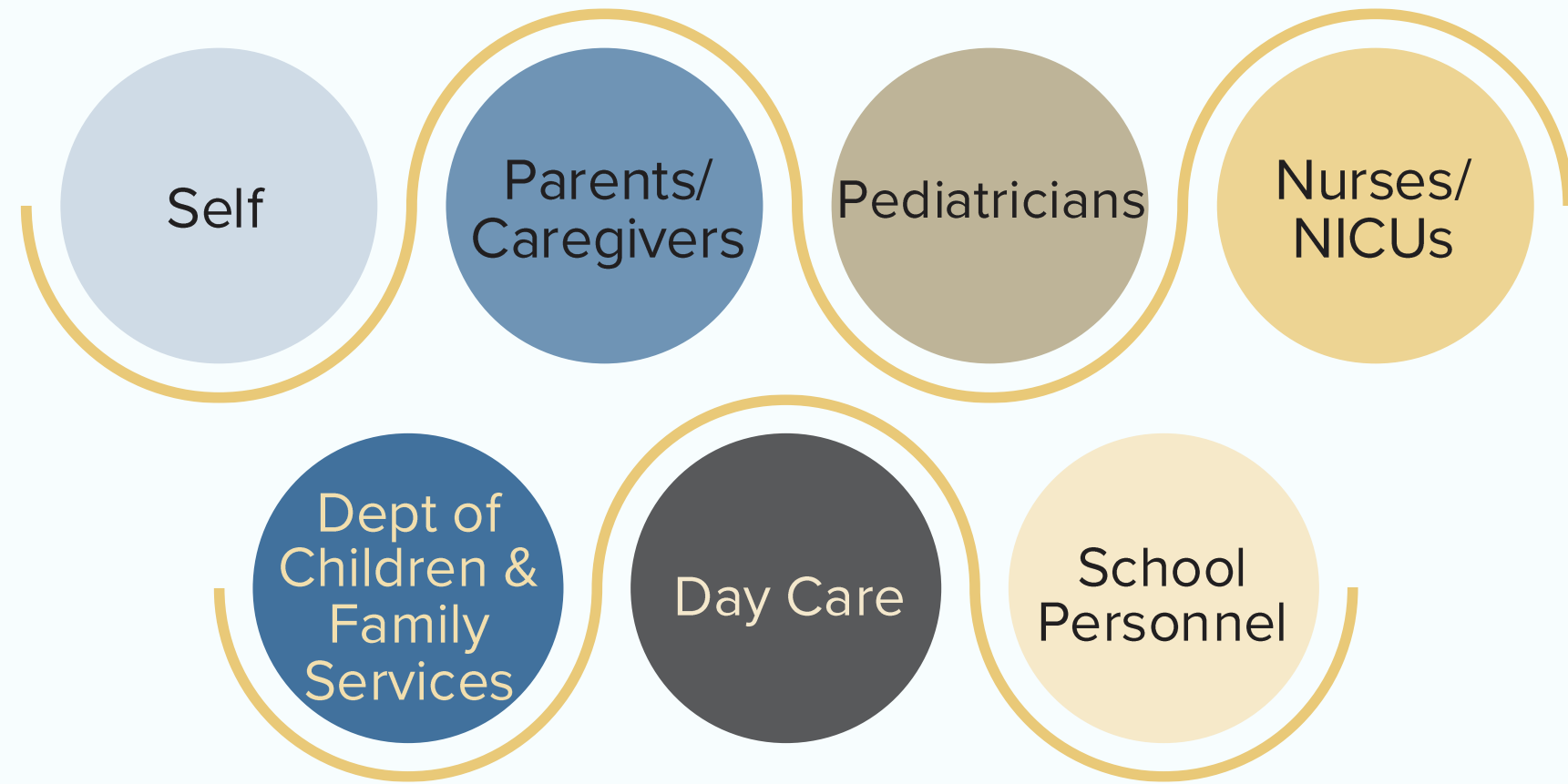
WHAT WE DO: SERVICES & SUPPORTS



Community

- Resource Development
 - Service Providers
- Family Support
 - Family Resource Centers
 - Support Groups
 - Parent Mentor Program
- Training and Education
- Special Events
 - Cultural Celebrations, Resource Fairs
- Legislative Advocacy

REFERRALS



INFORMATION NEEDED

- Must have a signed consent by Authorized Representative
- Contact Information for Person Making the Referral & Individual/Family
- Any documentation of concerns

HOW TO REFER



ONLINE APPLICATION

<https://www.harborrc.org/services/apply-for-services/>



CONTACT US



CALL

Under 3
(310) 543-0102

Over 3
(310) 543-0103



EMAIL

Under 3
intakeunder3@harborrc.org

Over 3
intakeover3@harborrc.org



IN PERSON

Long Beach Office
1155 E. San Antonio Dr.

Torrance Office
21309 Hawthorne Blvd

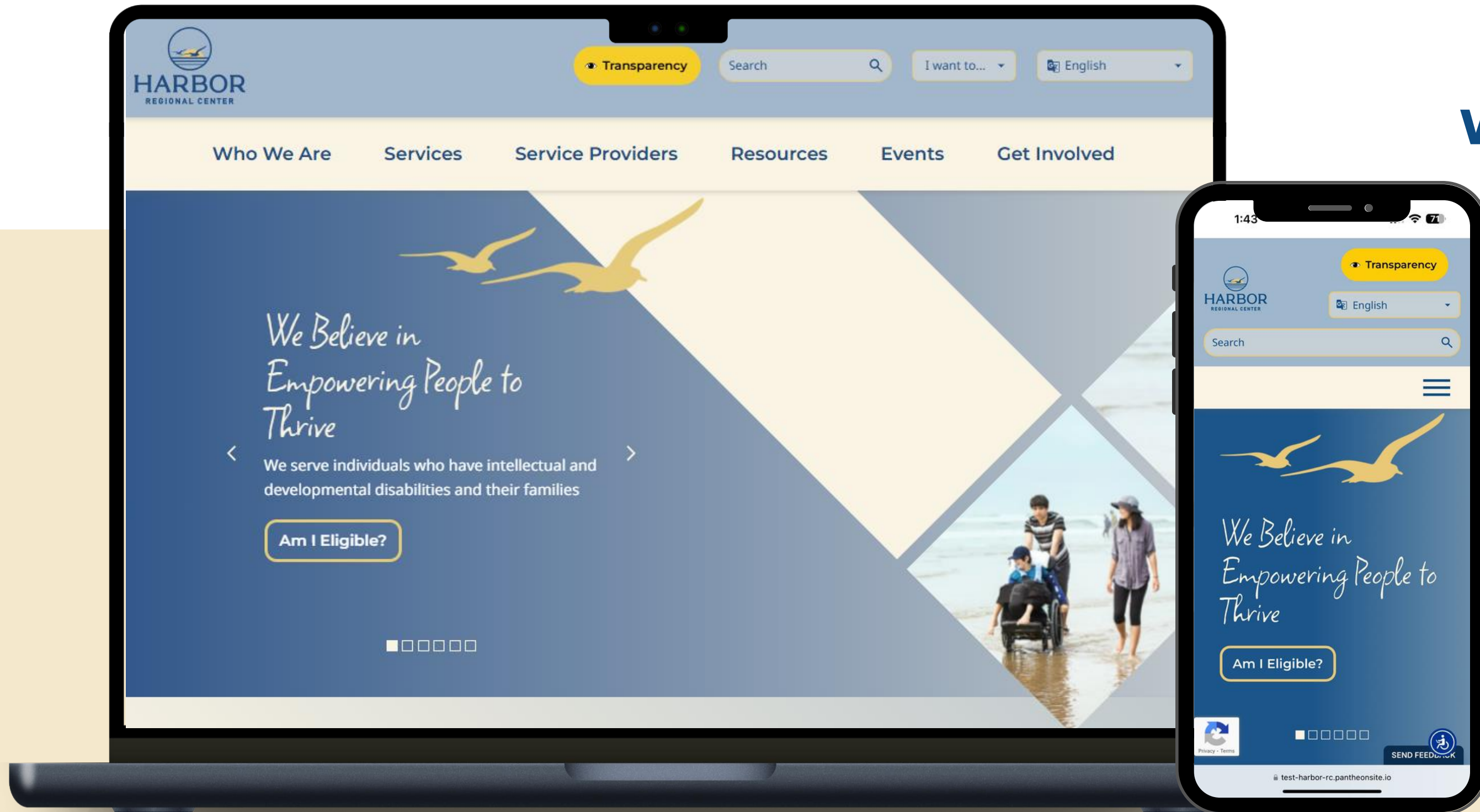


FAX

(310) 316-1036

WEBSITE

www.harborrc.org



- Apply for Services
- Services Lists
- Publications
- Newsletters
- Training & Events
- Share Input

Torrance

21309 Hawthorne Blvd.
Torrance, CA 90503
(310) 543 - 0104
resource.center@harborrc.org

Long Beach

1155 E. San Antonio Dr.
Long Beach, CA 90807
(310) 543 - 0105
resource.center@harborrc.org

Norwalk

12110 E. Walnut St.
Norwalk, CA 90650
(562) 526 - 2115
Alice.Cunningham@harborrc.org



**VISIT OUR
FAMILY RESOURCE CENTERS**

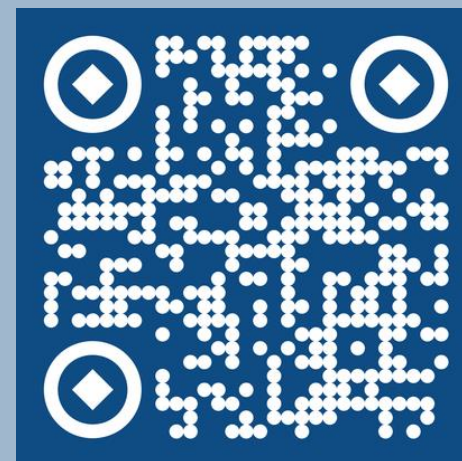


www.harborrc.org/subscribe

Subscribe to Harbor



Scan QR Code for Important Links



- Website
- Online Application
- Special Events & Training Calendar
- Careers



THANK YOU!



HARBOR
REGIONAL CENTER
www.harborrc.org

Thao Mailloux, LCSW
Strategic Communications &
Engagement
(310) 543 - 0154
thao.mailloux@harborrc.org

Eun Kim
Intake & Clinical
(310) 304 - 2630
eun.kim@harborrc.org
