

October 23, 2024
Fall CBO Convening

LA County Department of Health Services Housing for Health

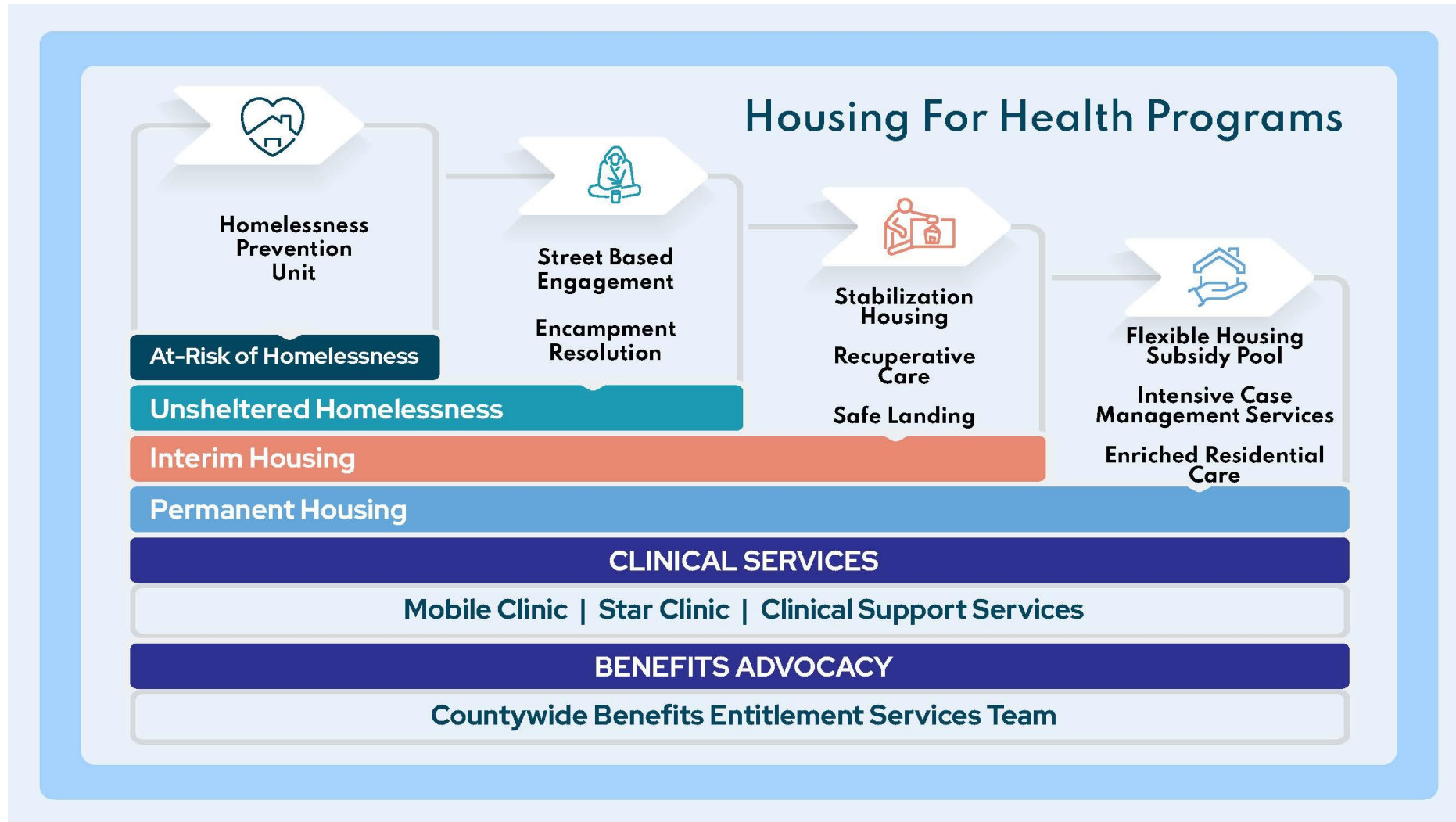
Brittnee Hill

Director of Interim Housing and Enriched Residential Care, Housing for Health



Health Services
LOS ANGELES COUNTY

HOUSING
FOR
HEALTH



Multi-Disciplinary Teams (MDTs)

- Provide access to physical health, mental health, substance use, case management, and peer support services

Mobile Clinics

- Work closely with MDTs to receive referrals for patients with complex medical & behavioral health needs
- Provide medical care including reproductive health, preventative medicine (cervical cancer screening and vaccinations), low barrier access to medications for addiction treatment, contingency management for meth use disorder, and transitions of care

Geographic Distribution of Coverage

- MDTs and Mobile Clinics provide coverage throughout all eight Service Planning Areas (SPAs) and to LA City Council Districts (CDs)



Different types of interim housing beds:

- Recuperative Care
 - Short-term housing for individuals recovering from an acute illness or injury who need stable housing with medical care
- Stabilization Housing
 - Interim housing with additional supportive services for unhoused individuals with complex health and/or behavioral health conditions
- Safe Landing Triage Beds
 - 24/7 rapid triage beds to longer term interim or permanent housing with clinical staff on site

Referrals are received from:

- DHS & private hospitals/clinics/ERs
- Recuperative care/skilled nursing & SUD treatment facilities
- Outreach teams, ICMS, LAHSA and DMH (triaged participants) & other County/City departments
- Referrals made in CHAMP or via universal referral form located at <https://dhs.lacounty.gov/housing-for-health/partners>



Program Overview & Referrals

Permanent Supportive Housing

Intensive Case Management Services

- Provide linkage to physical health, mental health, substance use, case management, and peer support services to PEH pre-housing match (housing navigation) and post housing (tenancy support)
- Trauma informed, housing first and harm reduction philosophies are core tenants to ensure a "whatever it takes approach"

Flexible Housing Subsidy Pool

- Fiscal and contractual tool that creates local-funded housing subsidies and supports in scattered site, project-based, and enriched residential care settings
- Can be used for different housing settings and households that are ineligible for federal subsidies

Referrals made through CES for PSH and in CHAMP for Housing Navigation ICMS



Enriched Residential Care facilities, also known as Board and Care or Assisted Living facilities

- Provide housing for high acuity individuals who have:
 - Complex physical or behavioral health conditions
 - ADLs/iADLs support needs due to cognitive, physical health, or behavioral health impairments
- Participants referred from an inpatient hospital, interim housing settings, streets, or PSH
- Facilities provide around the clock staffing, care and supervision, and assistance with ADLs

Referrals available through the Interim Housing Outreach Program (IHOP) for IH participants



The **In-Home Care Giving (IHCG)** program:

- Promotes self-sufficiency for participants through comprehensive personal caregiving services:
 - Grocery shopping
 - Meal preparation
 - Household chores
 - Transportation
- Participants typically include:
 - Those awaiting approval for In Home Supportive Services (IHSS)
 - Those who do not qualify for state assistance
 - *Goal:* transition clients from temporary IHCG program to Personal Care Giving (PCG) and IHSS programs
- **Referrals available** to eligible participants residing in:
 - Interim housing through the Interim Housing Outreach Program (IHOP)
 - Permanent supportive housing through ICMS



DHS, DMH, & DPH-SAPC's Interim Housing Outreach Program (IHOP)

- Consist of nurse practitioners, registered nurses, social workers, medical case workers, occupational therapists, community health workers and patient financial services workers
- Assess individuals and secure IHCG, ECM, medical/behavioral health services, and connection to recuperative or stabilization beds or ERC slots
- Provide education to shelter staff about how to refer/provide clients with higher levels of care and/or stabilizing services

IHOP Program Roll Out

- **SPAs 4 & 6:** DHS & DMH currently receiving referrals for individuals with ADL needs & higher acuity individuals with SMI/SUD
- **SPAs 2 & 8:** In November, DHS will begin to receive referrals

To submit a **referral**, [click here](#) or scan the QR code



Thank you!



Health Services
LOS ANGELES COUNTY

HOUSING
FOR
HEALTH