



Health Services
LOS ANGELES COUNTY



ACEs LA

Housing and ACEs

Shannon Thyne, MD
Chief of Pediatrics
Olive View-UCLA Medical Center
Professor of Pediatrics
David Geffen School of Medicine at UCLA

Adverse Childhood Experiences (ACEs)

Abuse



Physical



Emotional



Sexual

Neglect



Physical



Emotional

Household Challenges



Mental
Illness



Intimate
Partner
Violence



Parental
Separation
or Divorce

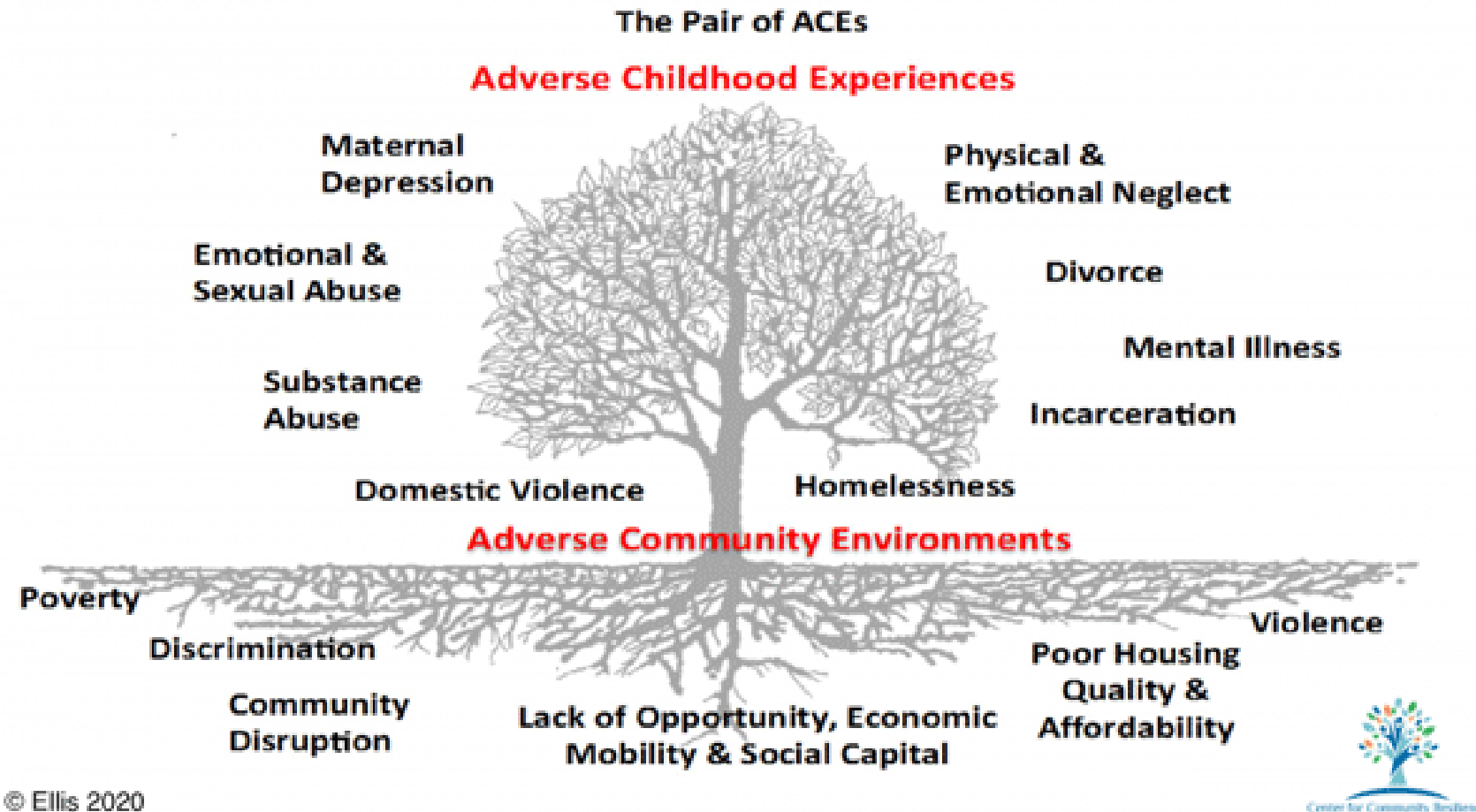


Incarceration



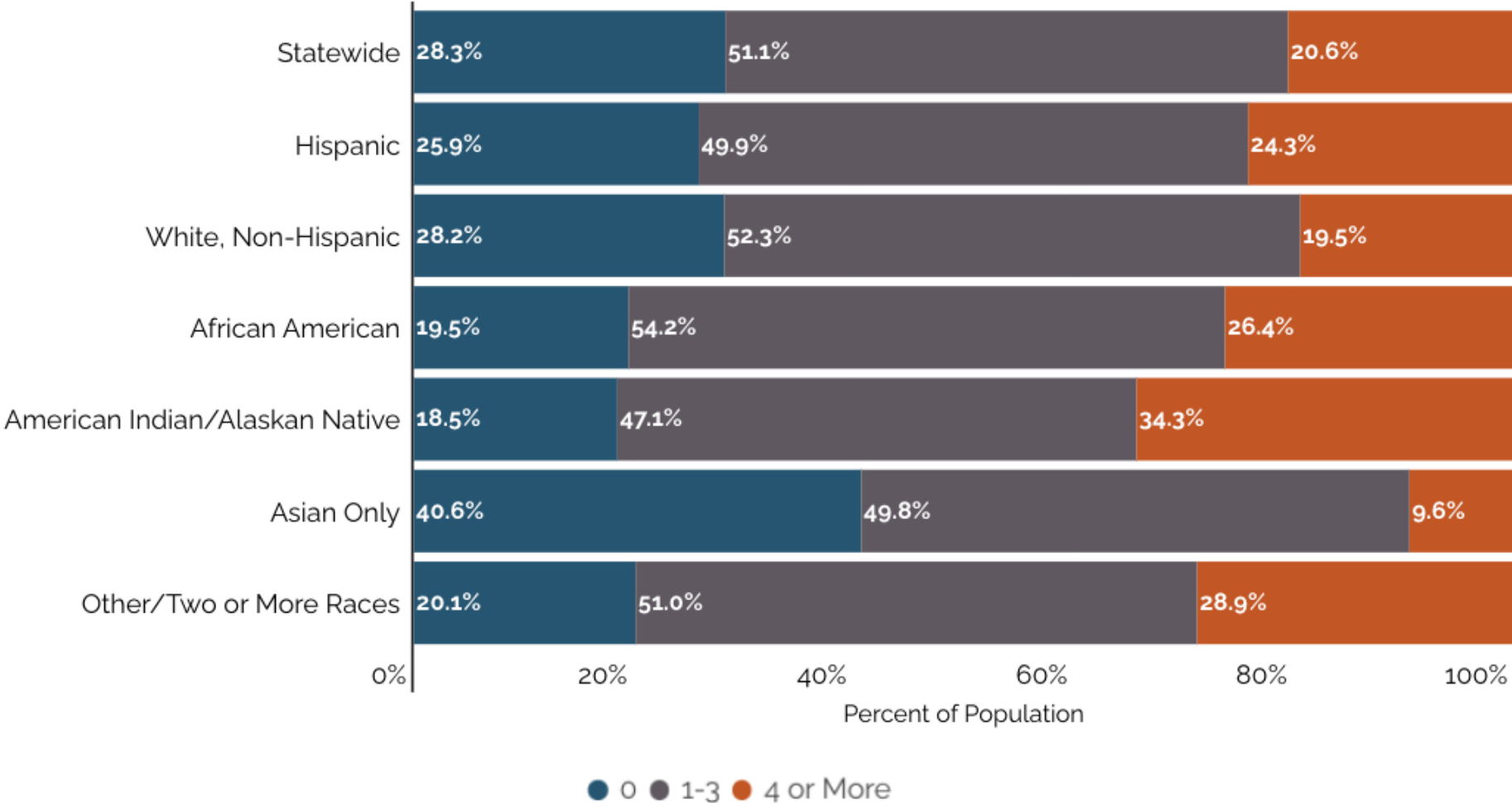
Substance
Misuse or
Dependence

Additional Adversities



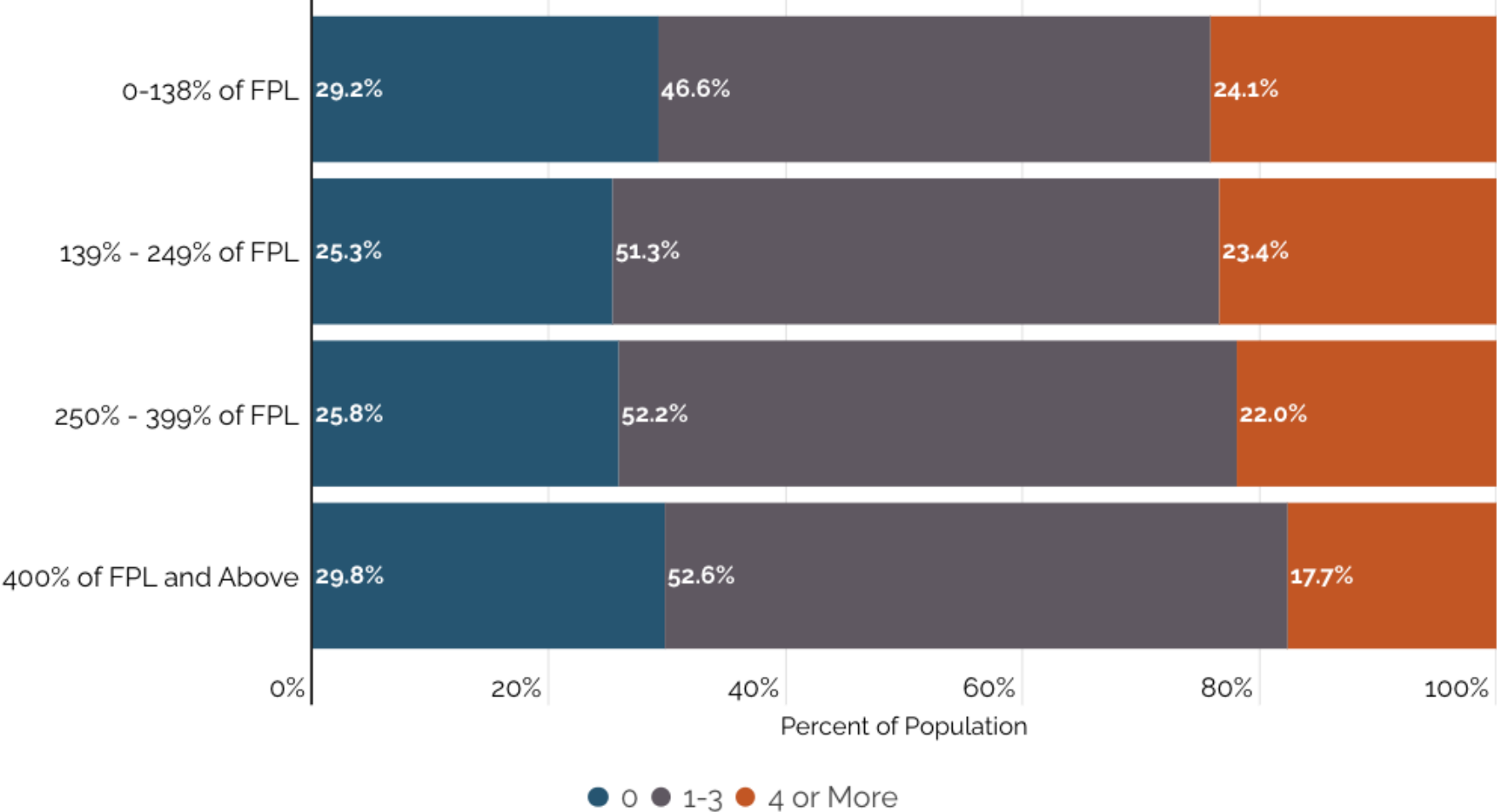
Source: <https://www.ncsl.org/research/health/adverse-childhood-experiences-aces.aspx>

Percentage of California Adults with 0, 1-3, and 4+ ACEs, by Race/Ethnicity



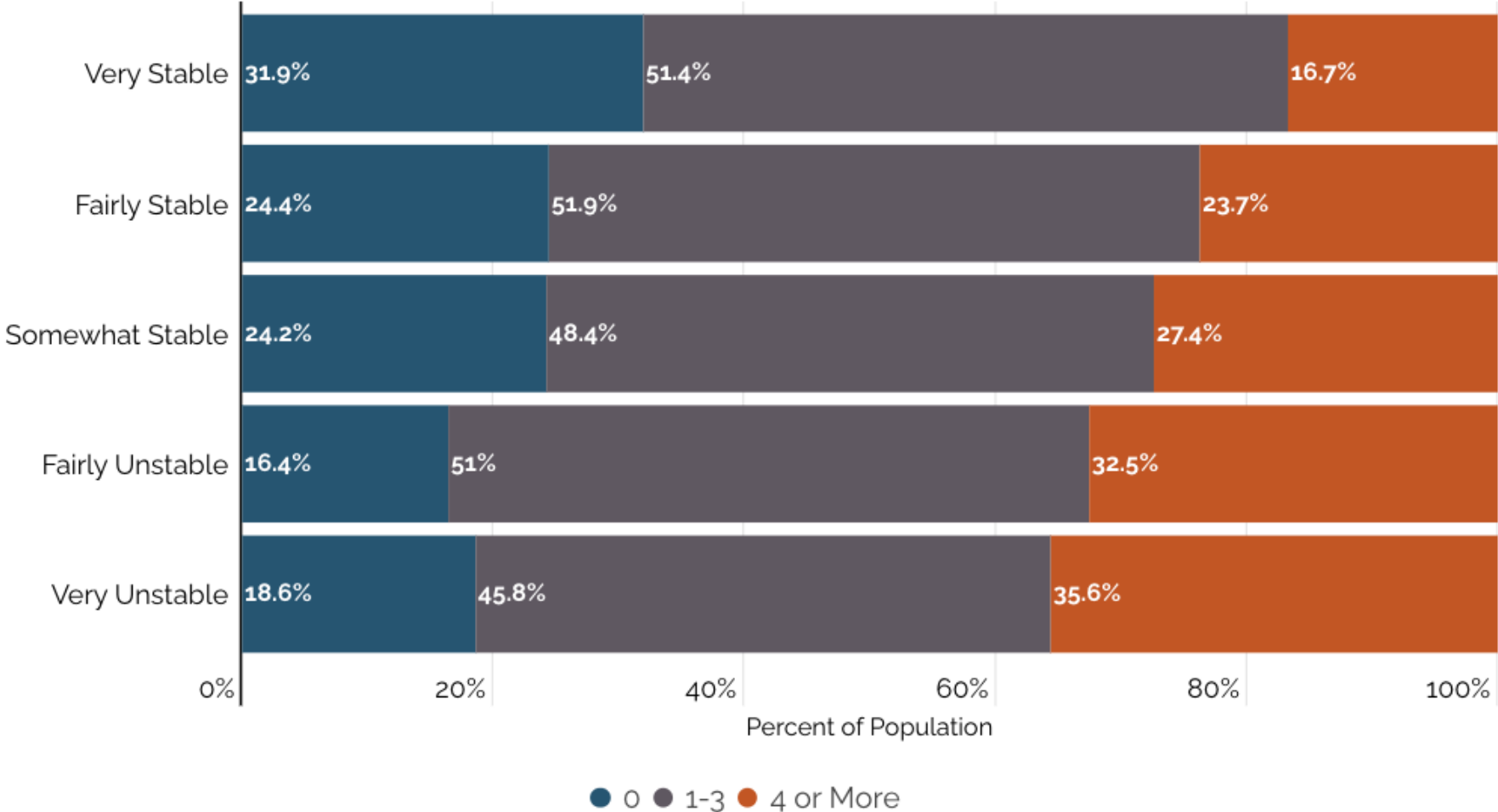
Source: UCLA Center for Health Policy Research, California Health Interview Survey (CHIS), 2021-22. Analysis conducted by UCAAN Data Team.

Percentage of California Adults with 0, 1-3, and 4+ ACEs, by Federal Poverty Level (FPL)



Source: UCLA Center for Health Policy Research, California Health Interview Survey (CHIS), 2021-22. Analysis conducted by UCAAN Data Team.

Percentage of California Adults with 0, 1-3, and 4+ ACEs, by Housing Stability



Source: UCLA Center for Health Policy Research, California Health Interview Survey (CHIS), 2021-22. Analysis conducted by UCAAN Data Team.

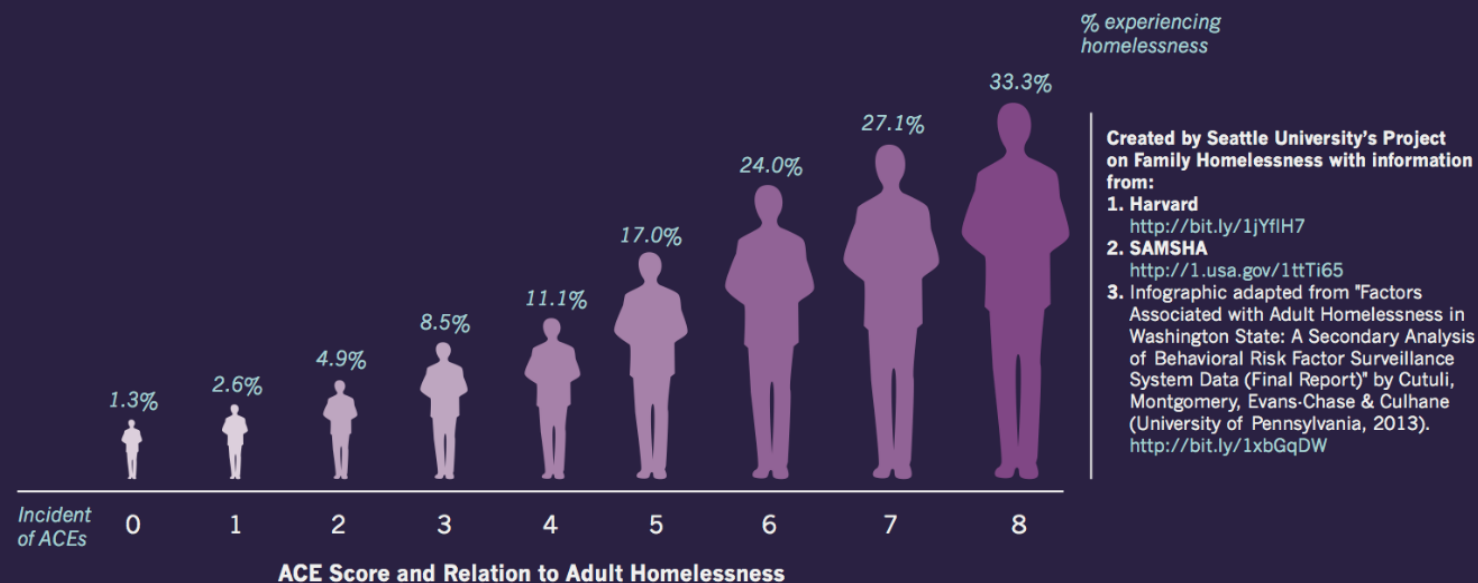
ACE SCORE AND RELATION TO ADULT HOMELESSNESS

What is toxic stress?

Toxic stress is long lasting stress over which the child has very little control. Involving the chronic elevation of stress hormones and a child's stress response system, it often occurs when a child must confront stressors without a safe, supportive adult to buffer their impact. It can be caused by abuse, neglect, and poverty and other ACEs.¹

What is an ACE?

Adverse childhood experiences (ACEs) are stressful or traumatic experiences, including abuse, neglect and a range of household dysfunction such as witnessing domestic violence, or growing up with substance abuse, mental illness, parental discord, or crime in the home. They can cause toxic stress and can lead to a variety of negative outcomes, including adult homelessness².



Proportion of Washington residents experiencing adult homelessness (among participants in Washington's Behavioral Risk Factor Surveillance System).³

Source:
<https://www.homelesshub.ca/blog/infographic-adverse-childhood-experiences-and-adult-homelessness>

Both Adverse and Positive Childhood Experiences Impact Housing Stability in Adulthood

4 +
Adverse
Childhood
Experiences



2x

Adults who reported **current unstable housing** experienced **high ACE scores** at twice the rate of those with stable housing.

6 +
Positive Childhood
Experiences



2x

Adults who reported **current stable housing** experienced a **high number of Positive Childhood Experiences** at twice the rate of those with unstable housing.

Source: 2021 California Health Interview Survey



Health Services
LOS ANGELES COUNTY



ACEs LA

Thank you for your partnership!

Shannon Thyne, MD
Chief of Pediatrics
Olive View-UCLA Medical Center
Professor of Pediatrics
David Geffen School of Medicine at UCLA