



LOS ANGELES COUNTY
DEPARTMENT OF
MENTAL HEALTH
hope. recovery. wellbeing.



SPRING PAD

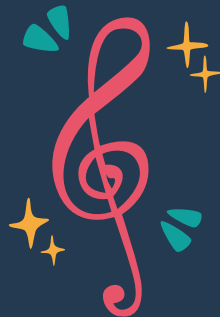


PARKSAFTER DARK
COUNTY OF LOS ANGELES DEPARTMENT OF PARKS & RECREATION

Parks After Dark is back for the 2024 spring season! Enjoy FREE activities at 34 LA County parks! Join us for concerts, movie nights, fitness and wellness activities, food, games and more!



MARCH 21 - APRIL 13 | FREE!
6-9 PM



TO VIEW THE FULL SCHEDULE VISIT:

PARKS.LACOUNTY.GOV/SPRINGPAD

Hilda L. Solis

LOS ANGELES COUNTY BOARD OF SUPERVISOR

Holly J. Mitchell

LOS ANGELES COUNTY BOARD OF SUPERVISOR

Lindsey Horvath

LOS ANGELES COUNTY BOARD OF SUPERVISOR

Janice Hahn

LOS ANGELES COUNTY BOARD OF SUPERVISOR

Kathryn Barger

LOS ANGELES COUNTY BOARD OF SUPERVISOR

Spring
PARKS AFTER DARK
COUNTY OF LOS ANGELES DEPARTMENT OF PARKS & RECREATION

MARCH 21 & 23

GEORGE LANE PARK
5520 W. Ave L-8
Quartz Hill, CA 93536

STEPHEN SORENSEN PARK
16801 E. Avenue P.
Lake Los Angeles, CA 93591

JACKIE ROBINSON PARK
8773 East Avenue R.
Littlerock, CA 93543

MARCH 28 & 30

ADVENTURE PARK
10130 S. GUNN AVE.
WHITTIER, CA 90605

AMIGO PARK
5700 JUAREZ AVE.
WHITTIER, CA 90606

MAYBERRY PARK
13201 E. MEYER RD.
WHITTIER, CA 90605

SORENSEN PARK
11419 ROSE HEDGE DR.
WHITTIER, CA 90606

APRIL 4 & 6

ALLEN J. MARTIN PARK
14830 E. GIORDANO ST,
LA PUENTE, CA 91744

ATHENS PARK
12603 S. BROADWAY.
LOS ANGELES, CA 90061

BASSETT PARK
510 N. VINELAND AVE.
LA PUENTE, CA 91746

BELVEDERE PARK
4914 E. CESAR CHAVEZ AVE.
LOS ANGELES, CA 90022

APRIL 4 & 6

BETHUNE PARK
1244 E. 61ST ST,
LOS ANGELES, CA 90001

HELEN KELLER PARK
12521 S. VERMONT AVE
LOS ANGELES, CA 90044

CHARTER OAK PARK
20261 EAST COVINA BLVD
COVINA, CA 91724

CITY TERRACE PARK
1126 N. HAZARD AVE.
E. LOS ANGELES, CA 90063

COL. LEON WASHINGTON PARK
8908 S. MAIE AVE.
LOS ANGELES, CA 90002

EARVIN MAGIC JOHNSON PARK
905 E. EL SEGUNDO BLVD.
LOS ANGELES, CA 90059

EL CARISO PARK
13100 HUBBARD ST.
SYLMAR, CA 91342

FRANKLIN D. ROOSEVELT PARK
7600 GRAHAM AVE.
LOS ANGELES CA 90001

GEORGE WASHINGTON CARVER
1400 E 118TH ST.
LOS ANGELES, CA 90059

JESSE OWENS PARK
9651 S. WESTERN AVE.
LOS ANGELES, CA 90047

LOMA ALTA PARK
3330 N. LINCOLN AVE. ALTADENA,
CA 91001

OBREGON PARK
4021 E. FIRST ST.
LOS ANGELES, CA 90063

APRIL 4 & 6

PAMELA PARK
2236 GOODALL AVE.
DUARTE, CA 91010

RIMGROVE PARK
747 N. RIMGROVE DR.
LA PUENTE, CA 91744

SALAZAR PARK
3864 WHITTIER BLVD.
LOS ANGELES, CA 90023

SAN ANGELO PARK
245 S. SAN ANGELO AVE, LA
PUENTE, CA 91746

TED WATKINS PARK
1335 E. 103RD ST.
LOS ANGELES, CA 90002

VAL VERDE PARK
30300 W. ARLINGTON RD.,
CASTAIC, CA 91384

VALLEY DALE PARK
5525 N LARK ELLEN AVE.
AZUSA, CA 91702

WILLIAM STEINMETZ PARK
1545 S. STIMSON AVE.
HACIENDA HEIGHTS, CA 91745

APRIL 11 & 13

EAST RANCHO DOMINGUEZ
15116 S. ATLANTIC AVE.
COMPTON, CA 90221

MONA PARK
2291 E 121ST ST.
COMPTON, CA 90222

SAYBROOK PARK
6250 EAST NORTHSIDE DR.
LOS ANGELES, CA 90022

COUNTY OF LOS ANGELES DEPARTMENT OF PARKS AND RECREATION OUR SPOT TEEN PROGRAM



Empowering Teens to Reach Their Full Potential



EL CARISO COMMUNITY REGIONAL PARK
13100 Hubbard St. Sylmar, CA 91342 • 818-367-5043

STEPHEN SORENSEN PARK
16201 E Ave P, Lake Los Angeles, CA 93591 • 661-264-1249

LOMA ALTA PARK
3330 N Lincoln Ave Altadena CA 91001 • 626 398 5451

RUBEN SALAZAR PARK
38264 Whittier Blvd Los Angeles CA 90023 • 323-260-2330

CITY TERRACE PARK
1126 N Hazard Ave Los Angeles CA 90063 • 323-260-2371

SAN ANGELO PARK
245 S San Angelo Ave, La Puente, CA 91746 • 626 968 2666

BELVEDERE COMMUNITY REGIONAL PARK
4914 E Cesar E Chavez Ave, Los Angeles, CA 90022 • 323-260-2342

AMELIA MAYBERRY PARK
13201 Meyer Rd, Whittier, CA 90605 • 562-944-9727

FRANKLIN D. ROOSEVELT PARK
7600 Graham Ave, Los Angeles, CA 90001 • 323-586-7226

MONA PARK
2291 E 121st St, Compton, CA 90222 • 310-603-3729

PAMELA COUNTY PARK
2236 Goodall Ave, Duarte, CA 91010 • 626-357-1619

EAST RANCHO DOMINGUEZ PARK
15116 Atlantic Ave, East Compton, CA 90221 • 310 603 3724

LENNOX PARK
10828 Condon Ave, Lennox, CA 90304 • 310-417-6712

Free Activities

**ARTS, MUSIC, GAMING, HOMEWORK ASSISTANCE,
SPECIAL EVENTS, AND FIELD TRIPS**

HOURS OF OPERATION

Monday through Friday • 3:00 p.m. to 7:00 p.m.
* hours subject to change

PARKS.LACOUNTY.GOV/OURSPOT

PARKS.LACOUNTY.GOV

LACOUNTYPARKS

#LACountyParks

#OURSPOTEMPOWERS



Environment, Science, Technology, Engineering, Art & Math

ESTEAM

SUMMER CAMP

FOR YOUTH AGES 6-11

MONDAY - FRIDAY | 7 AM TO 6 PM

JUNE 17, 2024 - AUGUST 9, 2024

The Los Angeles County Department of Parks and Recreation is offering an 8-week ESTEAM Camp (Environment, Science, Technology, Engineering, Arts and Mathematics) throughout Los Angeles County Parks. The camp connects children to the outdoors, encourages them to explore early career pathways, builds self-confidence and an understanding of ESTEAM topics, and inspires them to take action to improve their natural environment. Campers will learn and discover through group games, arts and culture experiences, guest speaker series and countless outdoor field trips and adventures. The camp uses various technology platforms to expose children to robotics, coding and gaming, and engineering projects. Lunch and morning and afternoon snack available at select sites.

**UNLOCKING SUMMER'S
POTENTIAL: WHERE
INNOVATION MEETS
ADVENTURE**

REGISTRATION DEADLINES

- Session 1: May 3, 2024
- Session 2: June 17, 2024
- Session 3: June 24, 2024
- Session 4: July 1, 2024
- Session 5: July 8, 2024
- Session 6: July 15, 2024
- Session 7: July 22, 2024
- Session 8: July 29, 2024

THEME WEEKS & DATES

- June 17 - June 21: Out of this World
- June 24 - June 28: Green Innovation
- July 1 - July 5: Craft Crafters
- July 8 - July 12: Let's Get Digital
- July 15 - July 19: Natural World
- July 22 - July 26: Inspired Inventor
- July 29 - August 2: Tinker Tech
- August 5 - August 9: Innovative Imagineers

Registration will remain open until May 3 or until full. Camps that do not meet the minimum registration will be cancelled.

CAREGIVER INFORMATION MEETING RSVP BY 5 PM ON FRIDAY, MARCH 15

Learn about the camp curriculum, how to register and important registration dates:

Priority Registration Opens: March 26 at 5 PM

Priority Registration Closes: April 2 at 5 PM

<https://forms.office.com/g/SWKsXMq2u9>

(Link will open on March 26 at 5 PM)

*Each park will also host its own caregiver meeting.



For more information, please contact the Park Supervisor or email recprograms@parks.lacounty.gov.

ESTREAM CAMP SITES

Arcadia Community Regional Park
405 S Santa Anita Ave.
Arcadia, CA 91006
(626) 821-4619
[REGISTER HERE](#)

Castaic Regional Sports Complex
31320 N. Castaic Rd.
Castaic, CA 91384
(661) 775-8865
[REGISTER HERE](#)

Crescenta Valley Community Regional Park
3901 Dunsmore Ave,
La Crescenta, CA 91214
(818) 249-5940
[REGISTER HERE](#)

Don Knabe Community Regional Park
19700 S. Bloomfield Ave.
Cerritos, CA 90703
(562) 924-5144
[REGISTER HERE](#)

El Cariso Community Regional Park
13100 Hubbard St.
Sylmar, CA 91342
(818) 367-5043
[REGISTER HERE](#)

Hacienda Heights Community Center
1234 Valencia Ave.
Hacienda Heights, CA 91745
(626) 333-3250
[REGISTER HERE](#)

Loma Alta Park
3330 N. Lincoln Ave.
Altadena, CA 91001
(626) 398-5451
[REGISTER HERE](#)

Manzanita Park
1747 Kwis Ave.
Hacienda Heights, CA 91745
(626) 336-6246
[REGISTER HERE](#)

Rowland Heights Park
1500 Banida Ave.
Rowland Heights, CA 91748
(626) 912-6774
[REGISTER HERE](#)

Belvedere Community Regional Park
4914 E Cesar E Chavez Ave.
Los Angeles, CA 90022
(323) 260-2342
[REGISTER HERE](#)

Allen J. Martin Park
14830 E. Giordano St.
La Puente, CA 91744
(626) 918-5263
[REGISTER HERE](#)

Carolyn Rosas Park
18500 Farjardo St.
Rowland Heights, CA 91748
(626) 854-5557
[REGISTER HERE](#)

Salazar Park
3864 Whittier Blvd.
Los Angeles, CA 90023
(213) 974-6411
[REGISTER HERE](#)

Sunshine Park
515 Deepmead Ave.
La Puente, CA 91744
(626) 854-5559
[REGISTER HERE](#)

Jackie Robinson Park
8773 E Avenue R.
Littlerock, CA 93543
(661) 944-2880
[REGISTER HERE](#)

Franklin D. Roosevelt Park
7600 Graham Ave.
Los Angeles, CA 90001
(323) 586-7228
[REGISTER HERE](#)

City Terrace Park
1126 N Hazard Ave,
Los Angeles, CA 90063
(323) 260-2371
[REGISTER HERE](#)

Valleydale Park
5525 N Lark Ellen Ave.
Azusa, CA 91702
(626) 334-8020
[REGISTER HERE](#)

San Angelo Park
245 San Angelo Ave.
La Puente, CA 91746
(626) 968-2666
[REGISTER HERE](#)

East Rancho Dominguez Park
15116 S Atlantic Ave.
Compton, CA 90221
(310) 603-3724
[REGISTER HERE](#)

EARVIN "MAGIC" JOHNSON PARK
1050 E 120th St.
Los Angeles, CA 90059
(323) 241-6709
[REGISTER HERE](#)

Helen Keller Park
12521 S. Vermont Ave.
West Athens, CA 90044
(323) 241-6702
[REGISTER HERE](#)

Lennox Park
10828 Condon Ave.
Inglewood, CA 90304
(310) 419-6712
[REGISTER HERE](#)

Amelia Mayberry Park
113201 E. Meyer Rd.
Whittier, CA 90605
(562) 944-9727
[REGISTER HERE](#)

Adventure Park
10130 S. Gunn Ave.
Whittier, CA 90605
(562) 698-7645
[REGISTER HERE](#)

Mona Park
2291 E 121st St.
Compton, CA 90222
(310) 603-3729
[REGISTER HERE](#)

Sorensen Park
11419 Rose Hedge Dr.
Whittier, CA 90606
(562) 908-7763
[REGISTER HERE](#)

Charter Oak Park
20261 E Covina Blvd.
Covina, CA 91724
(626) 339-0411
[REGISTER HERE](#)

Pamela County Park
2236 Goodall Ave.
Duarte, CA 91010
(626) 357-1619
[REGISTER HERE](#)

Stephen Sorensen Park
16801 E Ave P.
Lake Los Angeles,
CA 93591
(661) 264-1249
[REGISTER HERE](#)

Val Verde Community Regional Park
30300 Arlington St.
Castaic, CA 91384
(661) 257-4014
[REGISTER HERE](#)

MADE POSSIBLE WITH SUPPORT FROM

Hilda L. Solis
LOS ANGELES COUNTY BOARD OF SUPERVISORS

Holly J. Mitchell
LOS ANGELES COUNTY BOARD OF SUPERVISORS

Lindsey Horvath
LOS ANGELES COUNTY BOARD OF SUPERVISORS

Janice Hahn
LOS ANGELES COUNTY BOARD OF SUPERVISORS

Kathryn Barger
LOS ANGELES COUNTY BOARD OF SUPERVISORS

LA COUNTY PARKS & RECREATION PRESENTS

EVERY BODY PLAYS

June 10, 2024 - August 2, 2024
Monday - Friday: 11:00AM - 5:30PM

FREE!



Join us at Every Body Plays Drop-in, a safe space where youth can come play, create friendships and partake in activities such as fitness, self-care, sports, arts, games, creative outlets like storytelling and ESTEAM (Environment, Science Technology, Engineering, Arts and Math).

Classes, such as art, music, creative writing, pickleball, video productions, and more will be conducted during the Every Body Plays program starting Summer 2024.

Connect with LA County Parks staff for more information and for assistance. Every Body Plays provides youth ages 7-17 with access to caring and trained park staff who serve as mentors and lead an array of programs and activities. Every day is an adventure in LA County Parks!

ADVENTURE PARK
ALLEN J MARTIN PARK
ALONDRA PARK
AMIGO PARK
ARCADIA PARK
ATHENS PARK
AVOCADO HEIGHTS PARK
BASSETT PARK
BELVEDERE PARK
BETHUNE PARK
BODGER PARK
CAMPANELLA PARK
CAROLYN ROSAS PARK
CASTAIC SPORTS COMPLEX
CHARTER OAK PARK
CITY TERRACE PARK
COL. LEON H. WASHINGTON PARK
CRESCENTA VALLEY PARK
DALTON PARK
DEL AIRE PARK
DEXTER PARK
DON KNABE PARK
EARVIN MAGIC JOHNSON PARK
EAST RANCHO DOMINGUEZ PARK
EL CARISO PARK
ENTERPRISE PARK
EUGENE OBREGON PARK
FARNSWORTH PARK
FRANKLIN D. ROOSEVELT PARK
GEORGE LANE PARK

GEORGE WASHINGTON CARVER PARK
HACIENDA HEIGHTS COMMUNITY CENTER
HELEN KELLER PARK
JACKIE ROBINSON PARK
JESSE OWENS PARK
LADERA PARK
LENNOX PARK
LOMA ALTA PARK
MANZANITA PARK
MAYBERRY PARK
MONA PARK
PAMELA PARK
PATHFINDER PARK
PEARBLOSSOM PARK
RICHARD RIOUX PARK
RIMGROVE PARK
ROWLAND HEIGHTS PARK
RUBEN SALAZAR PARK
SAN ANGELO PARK
SAYBROOK PARK
SORENSEN PARK
STEINMETZ PARK
STEPHEN SORENSEN PARK
SUNSHINE PARK
TED WATKINS PARK
VAL VERDE PARK
VALLEYDALE PARK
VICTORIA PARK
WALNUT NATURE PARK



COUNTY OF LOS ANGELES DEPARTMENT OF

**Parks &
Recreation**

FREE SUMMER LUNCH & SNACK

Free Summer Lunch and Snack Program returns this Summer! Youth ages 18 and under receive nutritious lunch and snack that include vegetables, fruits and other healthy foods. The program aims to provide a healthy alternative for students when school is out for the summer.



MONDAY - FRIDAY

Snack: 12 - 1PM | Lunch 3 - 4PM
June 10 - August 2, 2024
Ages 18 and under

THERE IS NO SNACK SERVED ON JUNE 19 AND JULY 4 OR
ON COUNTY OBSERVED HOLIDAYS.