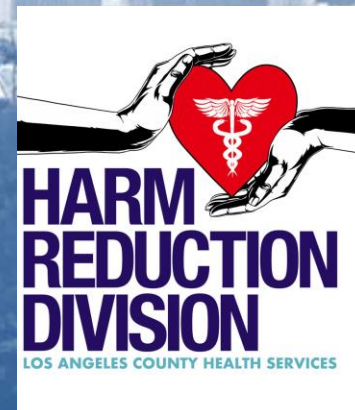


Department of Health Services Community Programs

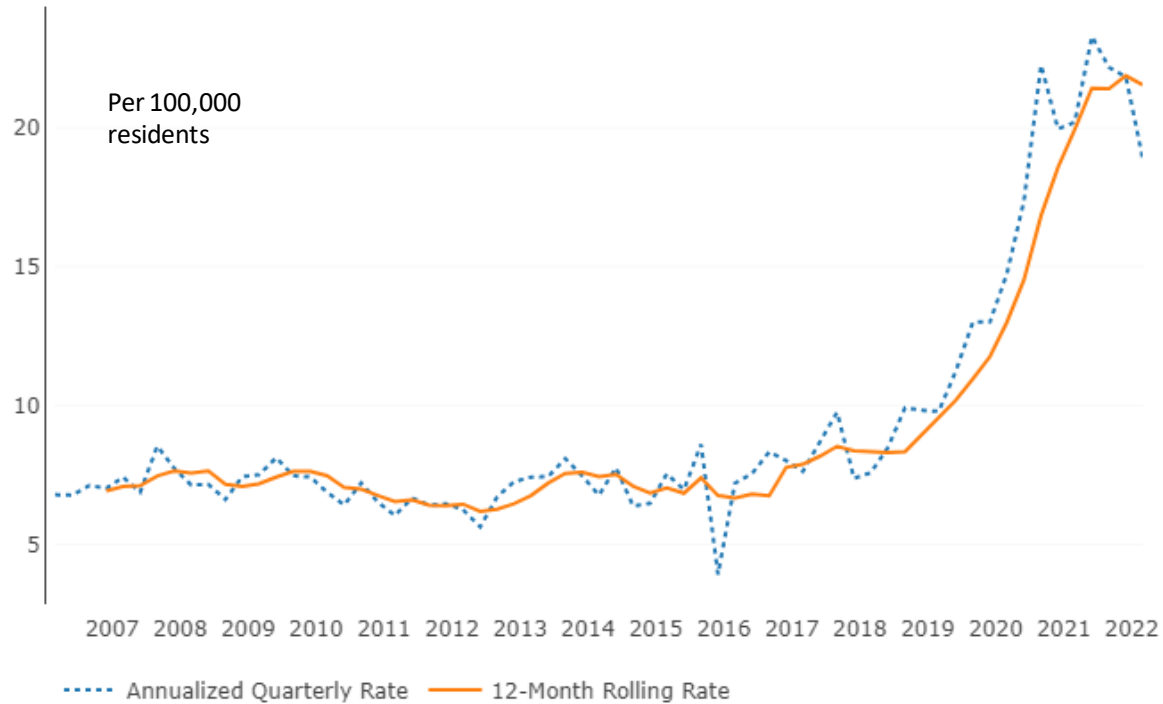
Eve Rubell, MPH
Sr. Program Manager



Health Services
LOS ANGELES COUNTY



Drug Overdose in LA County



<http://skylab.cdph.ca.gov/ODdash>



Health Services
LOS ANGELES COUNTY



Harm reduction is a practical and transformative approach that incorporates community-driven public health strategies - including prevention, risk reduction, and health promotion - to empower people who use drugs (and their families) with the choice to live healthy, self-directed, and purpose-filled lives. Harm reduction centers the lived and living experience of people who use drugs, especially those in underserved communities, in these strategies and the practices that flow from them.

<https://www.samhsa.gov/find-help/harm-reduction>



SAMHSA
Substance Abuse and Mental Health
Services Administration



No-cost naloxone vending machine at Los Angeles County Jail Release Center. December 2019.



NALOXONE

251,939 UNITS/ 503,878

OVERDOSES REVERSED

20,175

OEND

Overdose Education+
Naloxone Distribution

DHS Hospitals & Clinics

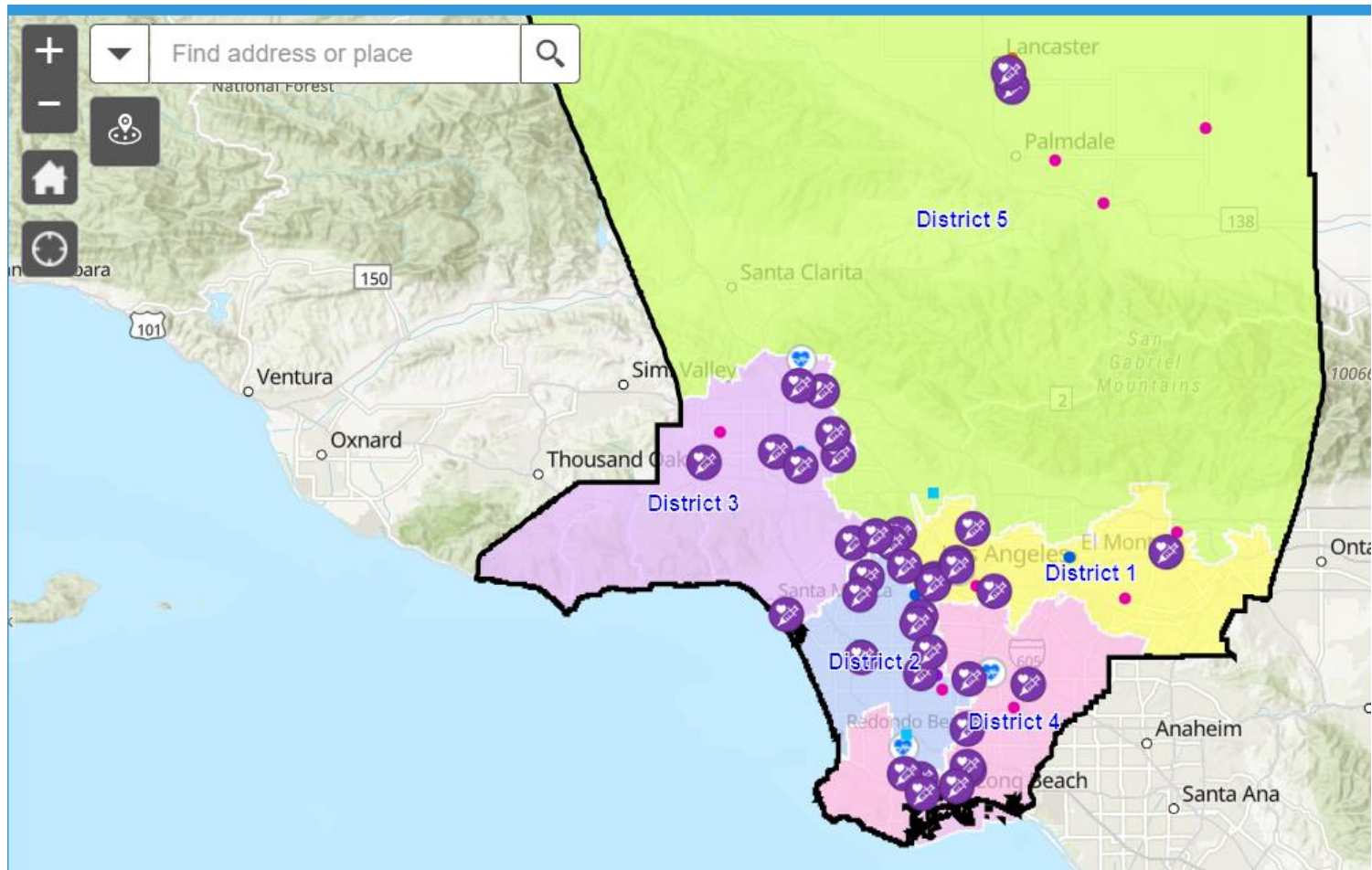
- SUD Subcommittee
- Expected Practices for people who use drugs
- DHS Staff Harm Reduction Training
- Harm Reduction Supplies- teens and families
 - Narcan/Naloxone
 - Other supplies
 - Vending machines
 - On-hand supplies



DHS Staff Training

- Harm Reduction Best Practices for People who use Drugs
- Harm Reduction Tools and Supplies
- Overdose Response and Naloxone Education

Harm Reduction Supplies Access Points (arcgis.com)



Referrals – Syringe Service Programs

[1\) List of SSPs by each DHS facility \(Upd. 5.10.23\).xlsx](#)



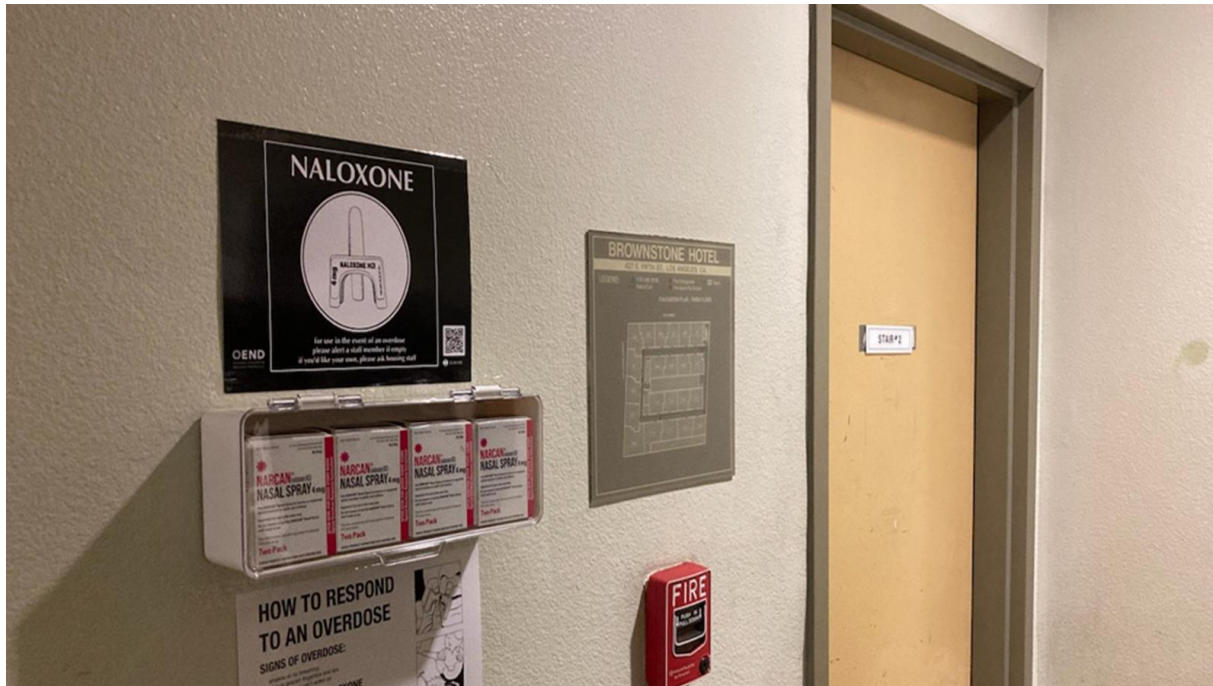
Harm Reduction Supply Box



Top shelf is detachable

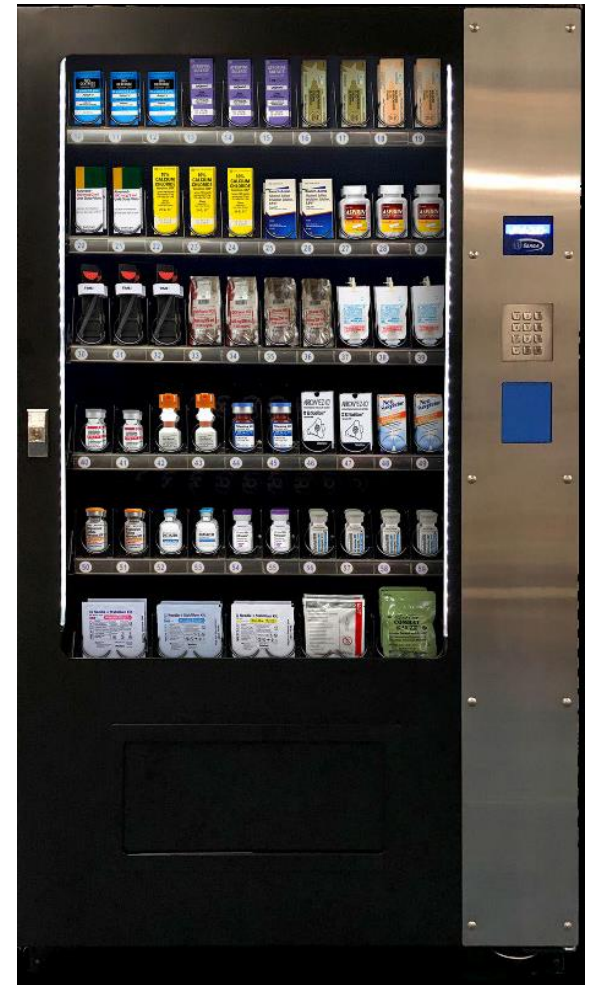


Wall box with naloxone



Coming Soon... Vending Machines Address Health Risks for Underserved Participants

- Giving people what they need to reduce overdoses, HIV, Hepatitis C, skin and other soft tissue infections, and sexually transmitted infections
- Increases equitable access to Substance Use Disorder supports and medical care.



Odprevention@dhs.lacounty.gov

Erubell@dhs.lacounty.gov



Health Services
LOS ANGELES COUNTY

<https://dhs.lacounty.gov/odr>

