

July 21, 2022

Help Me Grow LA Centralized Access Point

Website: helpmegrowla.org

Call Center: (833) 903-3972

Presenters:

Debra Camp, LA County Department of Public Health

Laura Stein, LA County Department of Public Health



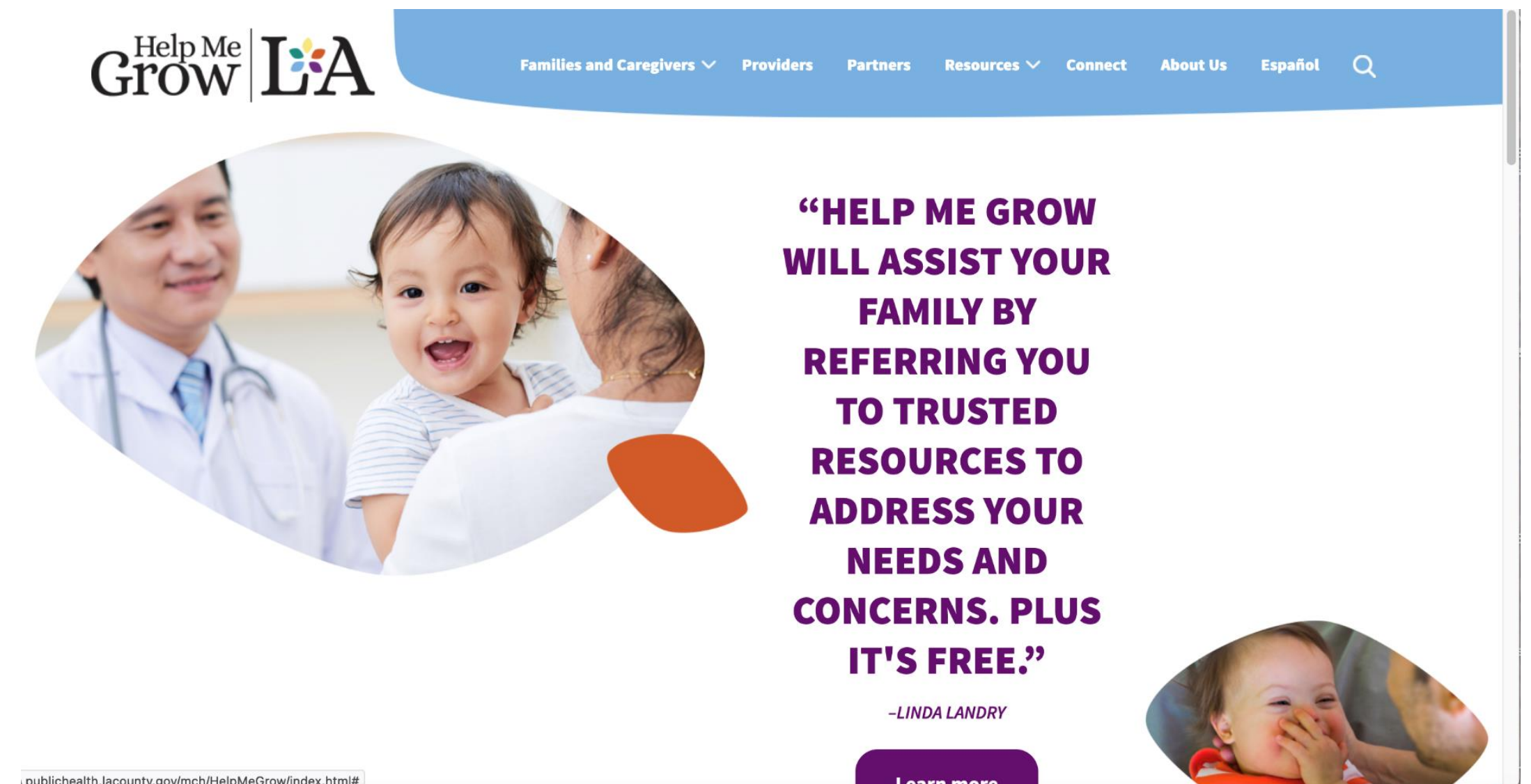
- A national model that promotes early identification and interventions when there is a concern for a young child's development
- A collaboration between First 5 LA and the Los Angeles County Department of Public Health
- Help families and providers find services that can support a child's development to make sure all children get connected to the services they need
- Focus on ages 0-5, but will help all families
- Serve all of LA County
- No income eligibility



Call Center: (833) 903-3972

- Open 8:30-3:00 Monday-Friday
- Staffed by Resource Liaisons
 - Navigate
 - Connect to Resources
 - Coach

Website: [HelpMeGrowLA.org](https://www.HelpMeGrowLA.org)



- **Self-Serve:** Family or Provider finds what they need on HelpMeGrowLA.org
- **Resource Assistance:** Family or Provider has a simple question about Help Me Grow
- **Resource Navigation:** Family needs more in-depth help finding resources and navigating the system of care.



Age of Child	Area of Concern	Referral/Connection
0-3	Development	<ul style="list-style-type: none"> Regional Center Family Resource Center
3-5	Development	<ul style="list-style-type: none"> School District/IEP Family Empowerment Center
0-5	Mental Health/Behavior	<ul style="list-style-type: none"> Mental Health Agency (We have a list by SPA)
0-5	Early Care and Education	<ul style="list-style-type: none"> Early Head Start Head Start
0-5	Extra family support	<ul style="list-style-type: none"> One Degree
0-5	All Families	<ul style="list-style-type: none"> Home Visitation Programs Supplemental Resources



Child Development



HOW CAN WE HELP YOU?

YOU PLAY A VITAL ROLE IN YOUR CHILD'S DEVELOPMENTAL HEALTH

We all want what's best for our children. You're not alone. HMG LA is here for you to help your child thrive. Help Me Grow LA connects all families to free or low-cost programs to help your child's development. HMG LA also provides resources, tips and tools to help you support your child's developmental milestones and skills.

Baby NAVIGATOR
What every parent needs to know

Register

Sign In

Your Baby at 6 Months



Baby's Name **Baby's Age** **Today's Date**

Milestones matter! How your baby plays, learns, speaks, acts, and moves offers important clues about his or her development. Check the milestones your baby has reached by 6 months. Take this with you and talk with your baby's doctor at every well-child visit about the milestones your baby has reached and what to expect next.

What most babies do by this age:

Social/Emotional Milestones

- Knows familiar people
- Likes to look at himself in a mirror
- Laughs

Language/Communication Milestones

- Takes turns making sounds with you
- Blows "raspberries" (sticks tongue out and blows)
- Makes squealing noises

Cognitive Milestones (learning, thinking, problem-solving)

- Puts things in her mouth to explore them
- Reaches to grab a toy he wants
- Closes lips to show she doesn't want more food

Movement/Physical Development Milestones

- Rolls from tummy to back
- Pushes up with straight arms when on tummy
- Leans on hands to support himself when sitting

Other important things to share with the doctor...

- What are some things you and your baby do together?
- What are some things your baby likes to do?
- Is there anything your baby does or does not do that concerns you?
- Has your baby lost any skills he/she once had?
- Does your baby have any special healthcare needs or was he/she born prematurely?

You know your baby he or she once had, or you have ask about developmental screening.

1. Ask for a referral to a specialist
2. Call your state or territory's e more and find the number at

For more on how to help your b

LEAD poisoning Know the Facts

Lead poisoning is caused by swallowing or breathing lead. Children under 6 years old are most at risk. If you are pregnant, lead can harm your baby.

FACT Lead can cause learning and behavior problems.

Lead poisoning hurts the brain and nervous system. Some of the effects of lead poisoning may never go away.

Lead in a child's body can:

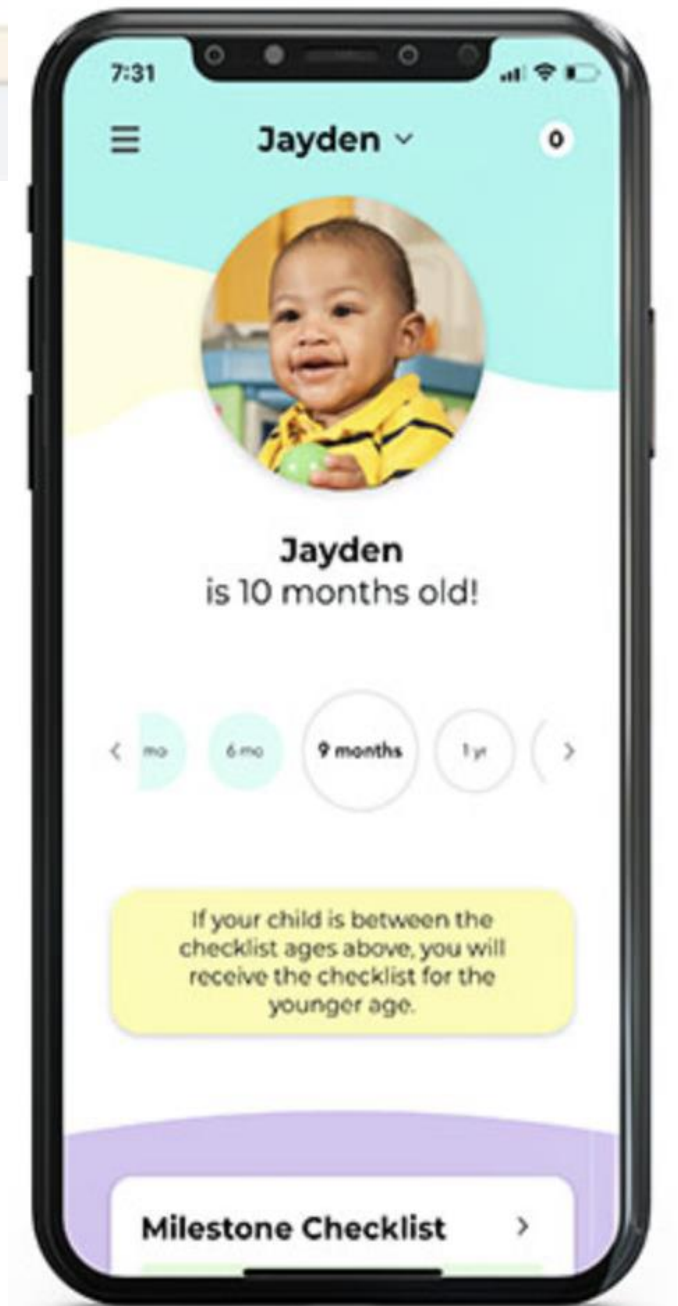
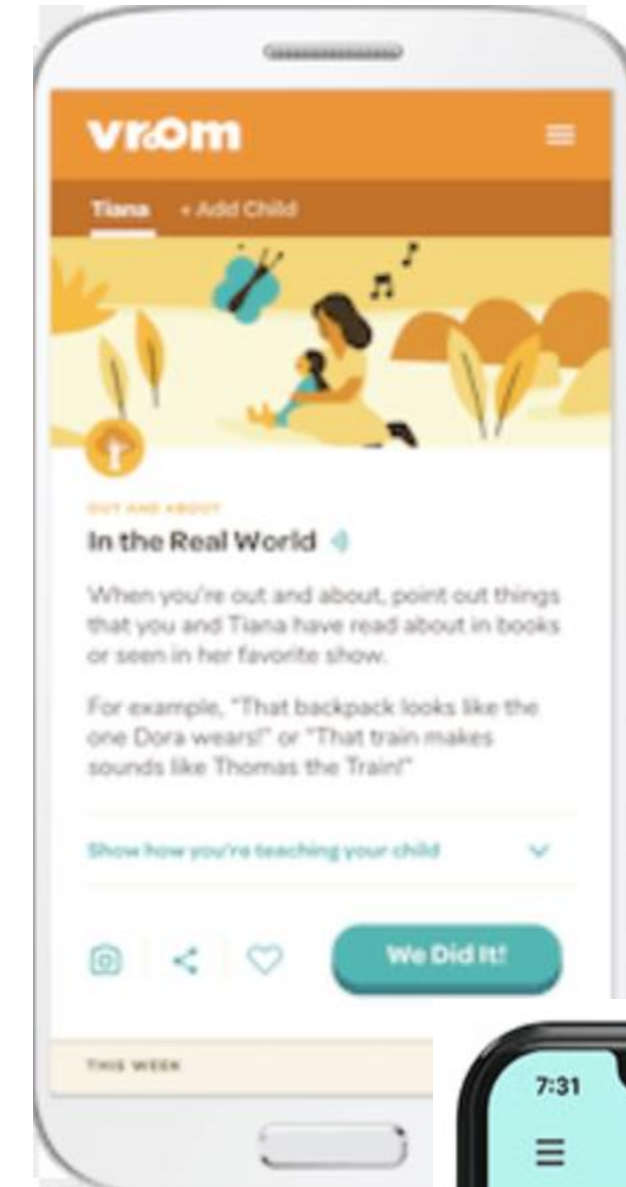
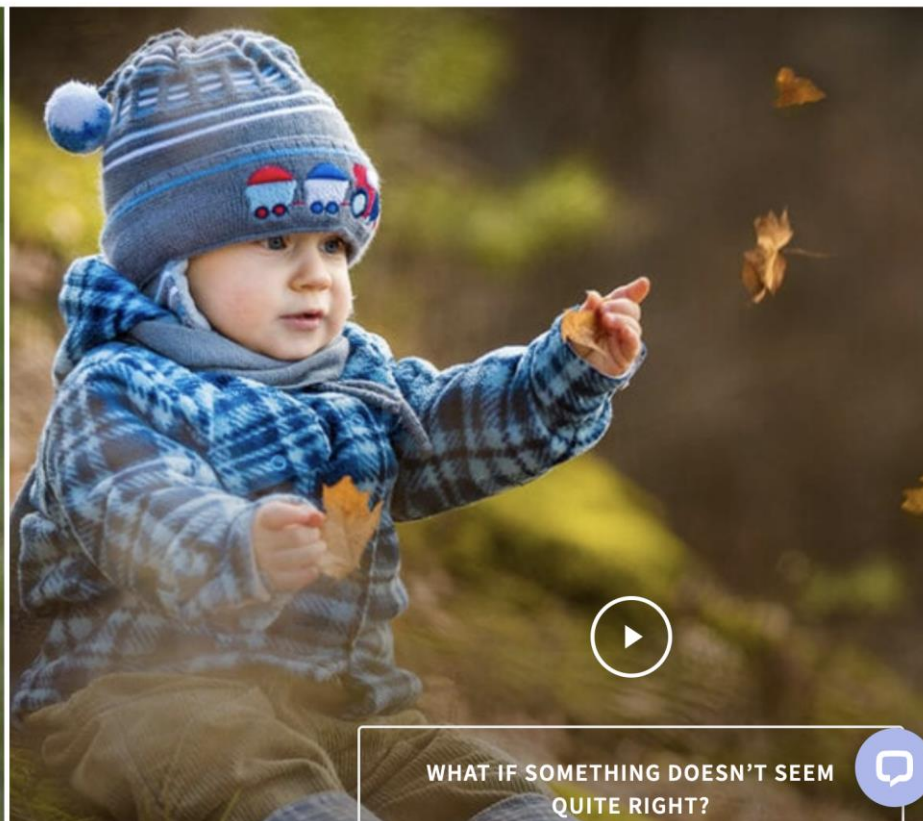
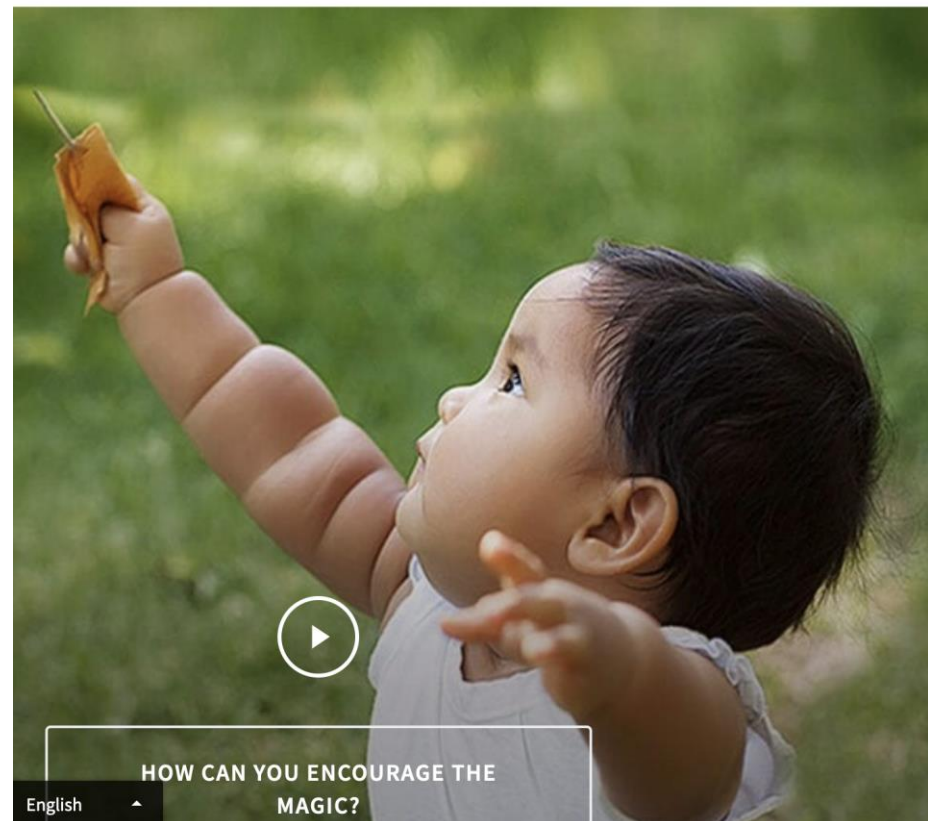
- Slow down growth and development
- Damage hearing and speech
- Make it hard to pay attention and learn

FACT Most children get lead poisoning from paint in homes built before 1978.

When old paint cracks and peels, it makes dangerous dust. The dust is so small you cannot see it. Most children get lead poisoning when they breathe or swallow the dust on their hands and toys.

FACT A lead test is the only way to know if your child has lead poisoning.

Most children who have lead poisoning do not look or act sick. Ask your doctor to test your child for lead.



Follow up in 2-3 weeks:

- Successful connections?
- Barriers got in the way?
- Advocacy resources





NEED HELP FINDING CHILD DEVELOPMENT RESOURCES IN YOUR COMMUNITY?

[Learn more](#)



?
HOW CAN WE HELP YOU?

Making a referral to Help Me Grow LA

The screenshot shows the Help Me Grow LA website interface. At the top left is the logo. A navigation bar contains links for Families and Caregivers, Providers, Partners, Resources, Connect, About Us, and Español. A large purple button labeled 'Connect' is prominent. Below it is a photo of a family. A yellow box contains the 'FAMILY & CAREGIVER HELP FORM' with fields for Name, Phone Number, Best Day, Best Time, Email, and Zipcode. A list of checkboxes allows users to specify the reason for their referral. A 'SUBMIT' button is at the bottom of the form. A yellow banner at the bottom of the screenshot says 'WE'RE HERE FOR YOU!'.

Connect

WE'RE HERE FOR YOU!

FAMILY & CAREGIVER HELP FORM

Family/Caregiver Name

Family/Caregiver Phone Number

Best Day > Best Time >

Family/Caregiver Email (Used to confir

Family/Caregiver Zipcode

Check all that apply.
I have a question/concern about a child's development.

- Speech, nonverbal
- Movement, not moving
- Learning delay or disability
- Behavioral or emotional
- Autism, "Spectrum"
- Sight/Blindness
- Hearing/Deafness
- Orthopedic, leg brace, wheelchair
- Other, not listed above
- I am interested in child development resources in my community
- I have a question/concern that is not mentioned above


SUBMIT

If you need help with basic needs for your family (food, transportation, etc.), please call 2-1-1 or visit www.211la.org.

1. HelpMeGrowLA.org
2. Connect page
3. Family & Caregiver Help Form
4. Click "submit"

Making a referral to Help Me Grow LA

one degree Menu Browse Resources Find Search for resour... Near Los Angeles, CA, USA Search Español My account



Help Me Grow Los Angeles




Los Angeles County, CA Verified Information

ACEs-LA Network

[Refer](#) [Bookmark](#)

Help Me Grow LA works with providers, local agencies, and the community to find and streamline services in Los Angeles County that can support a child's development.

Opportunities ? [+ Add opportunity](#)

 Get connected to developmental screenings and resources for children ages 0-5 with possible developmental delays.	Refer Bookmark
 Get support to learn how to navigate referrals and services for children ages 0-5 with possible developmental delays	Refer Bookmark
 Get connected to peer groups that provide support to families with children with developmental delays	Refer Bookmark

Reviews

[Review this service](#)

Have you used this resource? Click "Review this service" and tell us about your experience.

Notes

[Add a note](#)

[Ask us | Preguntanos](#)



Thank you

Website: HelpMeGrowLA.org

Call Center: (833) 903-3972

Contact:

Debra Camp (Public Health Nurse): DCamp@ph.lacounty.gov

Laura Stein (Program Specialist): LStein@ph.lacounty.gov

